



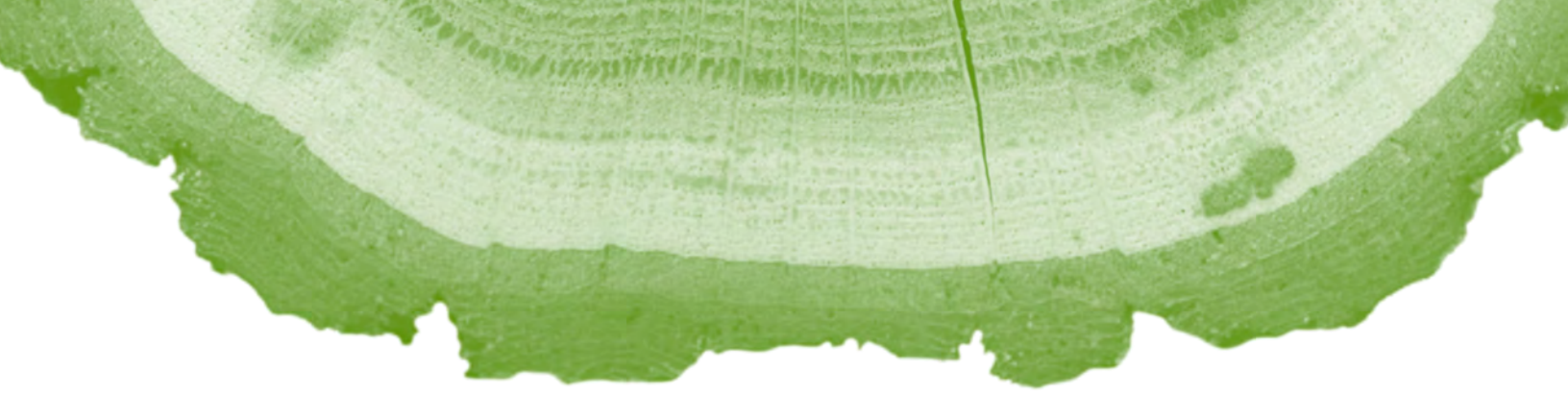
**OLMSTED
PARKS
CONSERVANCY**

ANNUAL REPORT 2025



Table of Contents

- Letter from President/CEO 3
- Mission, Vision, & Strategic Summary 4
- Park Investments 5-6
- Memorials & Celebrations..... 7
- Stewardship..... 8-9
- 1891 Society 10
- Outreach & Advocacy..... 11-12
- Community Programming 13-14
- Financials..... 15
- Staff & Board of Trustees..... 16
- Donors 17-30



To our dedicated friends and supporters,

What an honor it has been to step into the role of Olmsted Parks Conservancy President and CEO! From the moment I arrived, I have been welcomed with your stories and your hopes and dreams for our Olmsted Park System, and I have cherished every conversation.

The more I listen, the more the path forward comes into focus: investment in the entire Olmsted Park System, with special attention to disinvested spaces.

In 2025, we took not steps, but giant strides toward elevating our park system. An anonymous donor came forward with a transformative \$5 million gift for Chickasaw Park, the only Olmsted landscape designed for Black Americans during park segregation. This gift enabled us to hire a new full time Project Ambassador to work specifically in community engagement and project management for Chickasaw Park and our six other West End Olmsted Parks. This announcement was made at the celebration of the reopening of the renovated Chickasaw Park tennis courts, home of the West Louisville Tennis Club.



In our eastern flagship park, Cherokee, a gift from the Campbell family made possible the Campbell Overlook at Chauffeurs' Rest, a special place at the intersection of active trails and the most biodiverse natural areas in the park.

As I reflect on the accomplishments of 2025, I am inspired by the work ahead; to preserve the history of our Olmsted Park System, steward its natural areas, and build the Conservancy's capacity and stability to safeguard this treasure forever and for all. I am grateful for all of you who are on this journey with me.

Mary Grissom
President and CEO





Mission & Vision

Olmsted Parks Conservancy's mission is to **restore, enhance, and forever protect** Louisville's Olmsted-designed parks and parkways, connecting nature and neighborhood while strengthening the community's well-being. Our vision is to elevate our parks to bring the restorative power of nature to all.



Diversity & Inclusion

At Olmsted Parks Conservancy, we value diversity in all its forms for the same reason we value biodiversity in our parks: **it makes communities more resilient, sustainable, and vibrant.** Our parks are an intrinsic part of Louisville, and, as an organization striving for inclusivity, we commit to fostering diversity and respect both in nature and neighborhoods.



Strategic Summary

2023-2033

- Park Investments: Fill the gap in funding to enhance and protect the parks**
- Stewardship: Work for perpetual sustainability**
- Outreach and Advocacy: Center community voices in park planning**
- Community Programming: Deepen the connection between people and parks**
- Organizational Excellence: Align with the legacy of the Olmsted Park System**



- Stewardship: Act as trustorthy caretakers**
- Community: Bring people together on common ground**
- Inclusivity: Represent all park users**
- Enduring: Uphold Olmsted's vision for future generations**

Park Investments

Fill the Gap in Funding to Enhance and Protect Our Parks

Project	Cost	OPC Contribution
CHICKASAW TENNIS COURTS	\$500,000	\$200,000
CHAUFFEURS' REST RESTORATION	\$322,000	\$322,000
CENTRAL PARK PERGOLA RESTORATION	\$300,000	Project Mgmt.
CENTRAL PARK WALKING PATH RESTORATION	\$200,000	Project Mgmt.
SENECA PARK TREES, BENCHES & BIKE RACKS	\$60,000	\$60,000
CHICKASAW PARK INTERPRETIVE SIGNAGE	\$50,000	\$50,000
CENTRAL PARK ENTRANCE IMPROVEMENTS	\$45,000	\$45,000
MISCELLANEOUS PARK AMENITIES	\$40,000	\$40,000
TREES & LANDSCAPING	\$8,500	\$8,500
Totals	\$1,525,500	\$725,500

“November 15, 2025 was a glorious day in Chickasaw Park! On that day, in the presence of 100+ event participants, Congressman Morgan McGarvey, Major Craig Greenburg, Lonnie Ali, Olmsted Parks Conservancy (OPC), and other community leaders, West Louisville Tennis Club (WLTC) celebrated the completion of a total renovation of six (6) historic hard courts. This restoration was a multi-year project costing approximately \$440,000.

The West Louisville community thought the completed renovation would be our greatest blessing. However, that was just the beginning! On that same day, OPC announced an anonymous donation of \$5 million to be allocated over three years. These funds will be used to upgrade other outdated infrastructure in Chickasaw Park. Updated amenities create additional programming opportunities for the West Louisville Tennis Club, Play Cousins, Wilderness Louisville and all other program providers wishing to transform our community. Sustainability is important as multiple generations will come behind us! Our parks are meant to be safe spaces where people find serenity, peace, hope and a general appreciation for nature!

To the anonymous donor, described simply as a “lover of parks,” thank you for your discerning spirit and unconditional love!”

- Dr. Aretha Rochelle Fuqua, President, West Louisville Tennis Club





Park Investments

Chickasaw Park Restorations

The Chickasaw Park restoration is a \$5 million project that will establish Chickasaw Park as one of Louisville's premier parks while honoring the space as a nationally significant Black History site. This investment will restore a community landmark long regarded as a symbol of pride and belonging for generations of Black Louisvillians.

This gift is the second largest donation in Olmsted Parks Conservancy's history, and the Chickasaw Park Restoration Project will be the largest full scale park renovation led by the Conservancy. To ensure that this process reflects the needs and hopes of the Chickasaw area community, Olmsted Parks Conservancy has established the Chickasaw Park Restoration Community Steering Committee, composed of respected community leaders and longtime park advocates:

- **Ramona Dallum, Community Leader and Park Neighbor**
- **Aretha Fuqua, President, West Louisville Tennis Club**
- **Kristen Williams, Executive Director, Play Cousins Collective**

Additionally, we have welcomed a new full time staff member to our team! Dr. fari nzinga is the Project Ambassador: Olmsted West, who will lead community input for the Chickasaw Park Restoration Project.

Created in 1923, Chickasaw Park is believed to be the only park in the nation designed by the Olmsted Firm specifically for the Black community during segregation. For decades, it served as one of the few public spaces in Louisville where Black residents could gather in public freely to picnic and celebrate milestones.

The park was also beloved by Muhammad Ali, who grew up nearby and often ran the trails and trained there. Its open lawns and river views have provided the backdrop for generations of community events cementing its reputation as a cherished hub of Black life in Louisville. Home to the West Louisville Tennis Club, founded the same year the park opened, Chickasaw continues to be a beloved space for recreation and connection.

Memorials & Celebrations

Tribute gifts are a wonderful way to honor or memorialize a loved one while also improving the park experience for your neighbors! You can choose the park that is meaningful to you, and select a tree or bench option.



Tribute Gift: The Campbell Overlook

In 2019, Olmsted Parks Conservancy's Team for Healthy Parks enhanced Chauffeurs' Rest with a restored meadow that supports pollinators, reduces mowing, and sequesters carbon. A plan to build a stone overlook in the space was among many "wish list" improvements for which Olmsted Parks Conservancy would seek funding. Thanks to the Campbell family, the project was completed sooner than expected! The Campbell Overlook is an inviting destination along a multi-use trail and a lasting tribute to both Christian Campbell and Frederick Law Olmsted's vision. Thanks to their generosity, this cherished landscape will be enjoyed by generations to come. What an inspiration to see the Campbell family invest in an improvement that all of Louisville can enjoy!



"We are very thankful to Louisville Parks and Recreation and the Olmsted Parks Conservancy for allowing us to leave a mark upon this earth in memory of Chris that perpetuates his values, improves a beautiful Olmsted designed park, and makes the world a better place. The icing on the cake is the fact that the Campbell Overlook also perpetuates Frederick Law Olmsted's values, making beautiful 'viewsheds' and parks available to all."

– The family of Christian L. Campbell – Heather, Amelia, & Colleen Campbell

Stewardship

Working for Perpetual Sustainability

Our Park Stewards complete training to support the work of our Team for Healthy Parks. They will “adopt” an area and work independently and collaboratively to remove invasive plants, install native plants, pick up trash, and accomplish so much more in the parks than we could with our small staff.



5,100
Volunteer
hours



539
Volunteers



530
Trees &
shrubs
planted



530
Perennials
planted



84
Active
park stewards



~90,000
Sq. ft. of
landscaping
beds

“Volunteering as a Park Steward with Louisville Olmsted Parks has been an incredibly rewarding experience. I truly enjoy the community engagement and the opportunity to connect with people who share a love for nature and stewardship. Through this program, I’ve learned so much about plant identification, including the difference between invasive and non-invasive species, and I especially enjoy the tree walks that deepen my appreciation for our urban forest. It’s inspiring to learn, give back, and build relationships with like-minded individuals while helping care for parks that are truly designed with intention. I would absolutely encourage others to become a member and support our local Olmsted parks—they are a valuable part of our community and worth preserving for future generations.



I completed Park Steward training in the spring of 2021. While I do not currently have an adopted area, I have a strong affection for the Olmsted parks in my neighborhood—especially Algonquin, the park closest to me, as well as Chickasaw and Shawnee. My involvement focuses on trash cleanup efforts and advocating for park equity. I also enjoy volunteering at various events, including the Beer Gardens, Hayride on the Hill, the annual Cherokee Triangle Art Fair and of course guiding forest bathing (nature) immersions exclusively for OPC members. One of my favorite ways to engage with the community is promoting the sale of our T-shirts—they really are the best!”

- Teri Carr, Park Steward



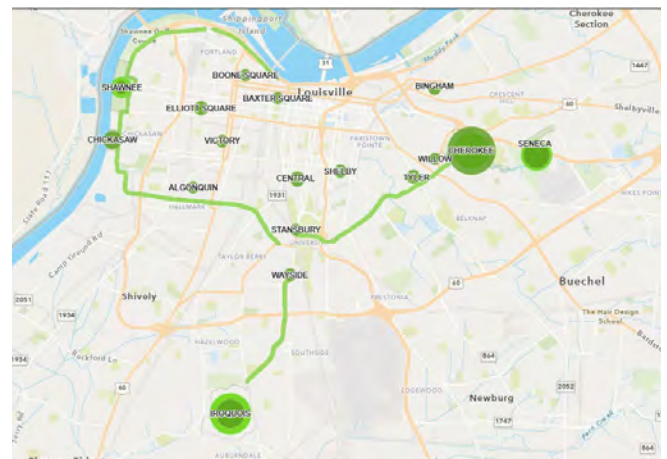
Stewardship cont...

Working for Perpetual Sustainability

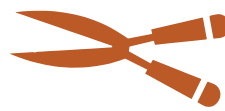
Our Team for Healthy Parks is a dedicated group that monitors and enhances park environments with the support of Park Stewards and volunteers. They restore, enhance and protect natural areas in the Olmsted Park System through ecological restoration, woodlands management and horticulture.

Benefits of ecological restoration:

- Rain gardens and basins mitigate stormwater and flooding
- Tree canopy assessments ensure climate resiliency
- Trail building and maintenance ensures access to natural areas
- Invasive plant management ensures native plant and tree regeneration
- Formal beds planted with native species support pollinator habitats
- Healthy parks enhance neighboring property values



Green areas indicate amount of time spent in each park.



700 acres
of natural areas
management



32
different
invasive species
treated



4,462 ft.
of trail
improved in
two parks



110,000 sq. ft.
of landscape
beds



Financial Stewardship

Working for Perpetual Sustainability

Many of those who are passionate about parks choose to include Olmsted Parks Conservancy in their estate plans. This is an impactful way to ensure that the Olmsted parks continue to receive investment for future generations.

The annual **1891 Society Dinner** is our way of celebrating those with planned gifts. We create an exclusive park experience that includes a catered dinner and tour. In 2025 we brought the dinner to the Iroquois Park, providing an exclusive park experience for those with a deep commitment to preserving our green spaces for future generations.

1891 Society Members

Frances Newman Alden*

Max Baumgardner*

Dr. Susan Bentley & Dr. Kim Jonason

David Berman

Kevin and Elizabeth Boswell

Carla Broderick

Jerry & Portia Brown

Elaine Bryan

Allen Bush & Rose Cooper

Nancy Bush

Dr. Thomas Courtenay

**deceased*

Janet Dakan

Dr. Shireen Deobhakta

Rachel Firkins & Alicia Fireel

Fred Greaves

David and Maureen Hale

Judy Hayes & Mark Carew

John & Jeannine Hayes

Caroline & Tim Heine

John & Sally Humphreys

Michael Pitt & Elaine Phillips Bryan

Reverend Edward W. Schadt

Charles and Ginger Schnatter

Diane Shott

Martha Simione

Charles and Karla Spencer

Mary Anne Thornton

Gwen Tilton & Michael Spoelker

David & Susan Vislisel

Matthew Whisman

Beth Wilkerson

George & Nancy Willis

Mimi Zinniel



Outreach & Advocacy

Centering Community Voices in Park Planning

Community engagement is the first step to identifying opportunities for a better park user experience.

Neighborhood meetings, surveys and Olmsted Parks Conservancy's own Friends of Olmsted Parks groups are valuable tools that make park projects community-led endeavors.

In 2025, we worked with park users to set the following projects in motion:

- Funding allocations for Iroquois Playground Renovation and installation of new Nature Play space
- Renovations to Chickasaw Tennis Courts and Lodge
- Additional funding for planning and improvements for the Big Rock area of Cherokee Park
- New signage and park amenities in Willow Park
- Continued improvements to the Central Park sidewalks

“The Friends of Iroquois Park feel a deep sense of pride, ownership, and protectiveness. Iroquois Park is a beloved South End treasure. It’s Olmsted’s renowned destination park. As such, we need a trusted partner that shares and matches our passion and commitment to protecting, restoring, and enhancing Iroquois Park with unwavering dedication. The Olmsted Parks Conservancy is that partner who inspires us to engage monthly, listens actively to us, takes strategic action, prioritizes projects, and helps us advocate. The Conservancy regularly partners with Metro Parks to creatively solve issues ranging from erosion and drainage to illegal clearing of park property to routine maintenance such as grass mowing and litter.



Focused, strategic advocacy in 2025 yielded amazing results due to the Conservancy’s ability to collaborate with and secure critical funding from various sources. We’re ecstatic that 2026 Iroquois Park projects include a \$725,000 restored / replaced accessible playground with a \$25,000 adjacent nature play space. We’re relieved critical park roads will be painted / striped and additional directional markings and pedestrian / bicycle symbols added to clearly communicate road rules, thus increasing safety. We’re supportive of the new Park Ranger Program and the value it adds. The Conservancy is our trusted, unwavering partner. Thank you!”

- **Maureen Welch**, Friends of Iroquois Park volunteer

Outreach & Advocacy cont...

Centering Community Voices in Park Planning

In addition to raising funds from donors like you, Olmsted Parks Conservancy also advocates for City funding for our parks.

In 2025, Metro Council approved \$2.5 million for the following projects requested by Olmsted Parks Conservancy:

- **Iroquois Park Playground** – Approved \$675,000 in Louisville Parks & Recreation budget for restoration of inclusive playground
- **Central Park** – Approved \$200,000 for sidewalk improvements
- **Big Rock at Cherokee Park** – Approved \$375,000 for restoration of historic Gaulbert Pavilion

Additional funding allocated by Metro Council members in the FY26 Capital Budget:

- Seneca Park tennis court renovations..... \$575,000
- Algonquin Park security upgrades \$300,000
- Cherokee Park restroom improvements \$85,000
- Eastern Parkway improvements..... \$1,530,000
- Algonquin Parkway improvements..... \$3,529,000





Community Programming

Deepening the Connection Between People and Parks

"The Olmsted Parks Conservancy (OPC) offers numerous community programs throughout the year including specialty hikes, tours, talks, beer gardens, and on and on. One of my favorite events is the annual hayride. Each fall the hayride is held at one of the Olmsted Flagship parks. What could be more fun than being with families and kids of all ages, on a guided tour of the park in a tractor-pulled hay wagon with food and games and other family fun activities.

I have been honored to work with the Olmsted Parks Conservancy (OPC) in a variety of roles for three and a half decades. In the 1980s, essentially all the public parks in Louisville and Jefferson County suffered from a significant lack of funding and low levels of public appreciation. OPC began changing that narrative in the early 1990s by forming a partnership with Louisville Metro Parks. That partnership was the beginning of a monumental shift that has greatly improved the conditions in our parks and the relationship that we Louisvillians have with our public parks. Today, we are so fortunate to live in a community that appreciates, supports, and celebrates our parks and the Olmsted Parks legacy.

Parks are for the people, and OPC is focused on a mission to restore, enhance and forever protect Louisville's Olmsted-designed parks and parkways, ensuring everyone can enjoy the restorative power of nature. Join us this fall for a hayride and experience the parks in a whole new way!"

- **Jerry Brown**, Retired Metro Parks Engineer & OPC volunteer and Trustee





Community Programming cont...

Deepening the Connection Between People and Parks

Community events create synergy between nature and neighborhood:

- Ballet Bound Workshop Auditions in Algonquin, Central, Chickasaw, Iroquois, Seneca and Shelby Parks
- Pet Clinic in Chickasaw Park
- Silent Disco and Free Yoga in Central Park
- Senior Day with ElderServe in Elliott Park
- Free hikes in Iroquois Park
- Back to School Giveaway in Shelby Park
- Beer Gardens in Bingham, Cherokee, Seneca, Shelby, Stansbury and Tyler Parks



5,975
event attendees



40
events



126
community meetings



1,760
Olmsted Parks Conservancy members



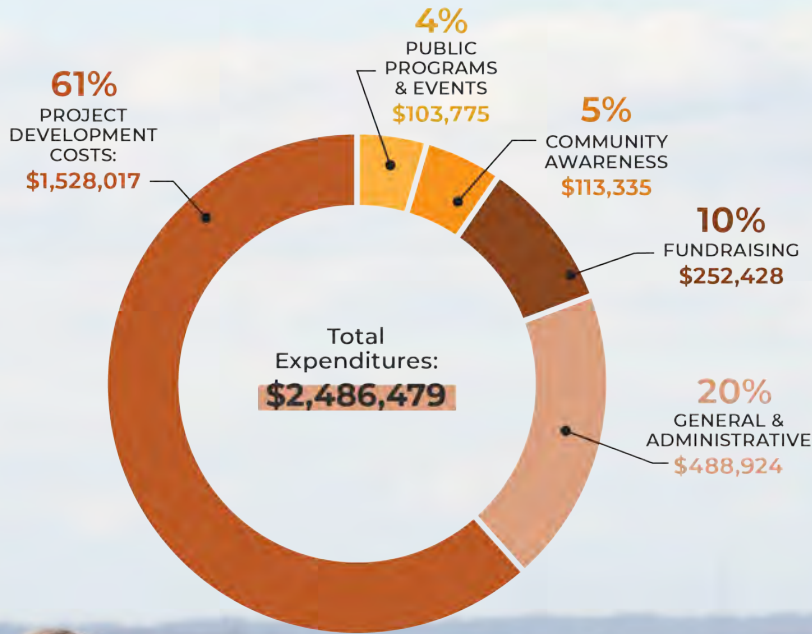
42
community organization collaborations



4
Friends of Olmsted Parks groups

Financials

DISTRIBUTION OF FUNDS



Total admin expenses..... \$488,924
Total ending net assets..... \$8,061,557

Distribution of Funds

Project Development Costs..... \$1,528,017
 Community Awareness..... \$113,335
 Public Programs and Events..... \$103,775
 Fundraising \$252,428
 General and Administrative..... \$488,924

Sources of Support

Corporate Sponsorship..... \$130,278
 Major Donors..... \$925,311
 Members..... \$217,797
 Grants..... \$671,550
 Memorials and Celebrations..... \$67,855
 Investment Income \$452,787
 Other..... \$101,374
 Funds Restricted for Projects..... \$1,465,195



Staff

Danielle Archer

SR. DIRECTOR OF DEVELOPMENT & MARKETING

Alex Boeckman

NATURAL AREAS TECHNICIAN

Katie DiAngelus

NATURAL AREAS TECHNICIAN

Mary Grissom

PRESIDENT & CEO

Kathy Ezzell

DONOR RELATIONS MANAGER

Rachel Firkins

DIRECTOR OF DONOR ENGAGEMENT & STRATEGY

Mary Ann Fox

HORTICULTURE SPECIALIST

Lauren Hendrickson

NATURAL AREAS SPECIALIST

Jesse Hendrix-Inman

DIRECTOR OF COMMUNICATIONS

Jason Hindenach

PROJECT DIRECTOR

Matthew London

LANDSCAPE SPECIALIST

fari nzinga, Ph.D.

PROJECT AMBASSADOR, OLMSTED WEST

Avery O'Brien

FIELD CREW TECHNICIAN

Matt Spalding

DIRECTOR OF STEWARDSHIP

Scott Terrill

NATURAL AREAS TECHNICIAN

Major Waltman

SPECIAL PROJECTS

Melissa Weis

DIRECTOR OF FINANCE & OPERATIONS

Sarah Wolff

DIRECTOR OF OUTREACH & ADVOCACY

Board of Trustees

John V. Hayes

CHAIR

Jon Salomon

VICE CHAIR

Earl F. Jones

SECRETARY

Faith Crump

TREASURER

ADDITIONAL MEMBERS

Jerry Brown

Andrew Mays

Cindy Carcione

Zach McClave

Wende Cosby

Conor O'Driscoll

Aretha Fuqua

Scott Osborne

Michael Gross

Michael Pitt

Caroline Heine

Anuj Rastogi

Amanda James

Oliver Roe

JoAnn James

Jon Salomon

Tom Jessee

Diane Scardino

Kelly Kowalczyk

Charles W. Schnatter

Holli Highfield Lewis

Gwen Tilton

HONORARY MEMBERS

LouAnn Atlas

G. Garvin Brown IV

Allen Bush

William E. Juckett

Charles (Mac) McClure III

Creighton E. Mershon, Sr.

Norman V. Noltemeyer

Bill Samuels, Jr.

Kennedy Simpson

IN MEMORIAM

Edwin H. Perry

Douglas D. Stegner

2025 Olmsted Donors

We strive to maintain an accurate and complete list of our valued donors. If you notice any errors or omissions, please do not hesitate to contact us to make the necessary corrections. We deeply appreciate your support and want to recognize you properly.

Oak Leaf Society **(Beargrass Preserve Investors)**

Jerry & Portia Brown
Elaine Bryan
Robert Callander
Cindy Hettinger-Carcione &
Raymond Carcione
Lisa Causarano & Keith Morley
Roberta Fischer
Laura Frazier
The Gardner Foundation
Layla George & Michael Clark
Kelli & Henry Gordinier
John & Jeannine Hayes
Holly Hillerich-Clark
Jack & Kathy Hillerich
David Jones & Mary Gwen Wheeler
Bill Kantlehner
Mary & Don Korfhage
Barbara Moore
William & Michelle Mudd
Norman & Belita Noltemeyer
Kyle & Hilary Noltemeyer
Matthew & Ashley Petty
Michael Pitt
Laura Rice
Dr. Ruth Simons
Matt & Jena Stone
Amelia & Parker Theobald
Andy & Mandy Vine
David & Susan Vislisel
Beth Wilkerson

Conservation Circle

Anonymous
Jerry & Portia Brown
Allen Bush & Rose Cooper
Shelia Mason Crawford
Harvey & Sandra Diamond
Bruce & Jane Duthie
Sandra Frazier
Marlene & David Grissom
Ann & Doug Grissom
John & Jeannine Hayes
Earl & Lydia Jones
David Jones & Mary Gwen Wheeler
Charlie & Jenny Marsh
Andy Mays
Paul & Annie McLaughlin
James & Sandra Phillips
Michael Pitt & Elaine Phillips Bryan
Charles & Ginger Schnatter
Farrell & Karen Smith
Lindy Street
Gwen Tilton & Michael Spoelker
The Varga Family
Richard Vissing

Arthur K. Smith Family Foundation
Cherokee Triangle Association
Frances Alden Charitable Trust
Max Baumgardner Charitable Trust
May Wetherby Jones Foundation
Momma's Mustard, Pickles & BBQ
Office of John Yarmuth
Schneider Electric
The Gheens Foundation
USDA

Circles of Leadership

Anonymous
Dan & Bunny Abbott
Jennifer Adam & Jason Thompson
Dr. Anna Lee Adams
Dr. Edwin Ahrens
M.A. & Ed Allgeier
Chris Amstutz
Catrina & Jay Ankenbrand
Danielle & Charlie Archer
Vanessa Armstrong
LouAnn Atlas & John Ryan Coady
Stanley & June Atlas
Dr. J. Keith Auerbach
Summer Auerbach & Brandon Coan
Cara & Jay Baribeau
Leslie Barras
Brooke & Matthew Barzun
Dr. Susan Bentley & Dr. Kim
Jonason
Edith Bingham
Ellen Bland
William Bogel
Theresa Bondurant
Kristin Booker
Kevin & Elizabeth Boswell
Garvin & Steffanie Brown
Meredith Brown
Elaine Bryan
Jeffrey & Susan Callen
Brian Caudill
Luke & Kacie Chase
Nellie & Jon Childers
Dr. John Conner & Frank Heil
Robert Conroy
Drs. Larry & Christine Cook
Keith & Victoria Coombs
William Crawford
Faith Crump

2025 Olmsted Donors

Circles of Leadership cont...

Cynthia A. Cunningham
Mary Jo & Glenn Davis
Ed & Molly Davis
Don & Jeannie Dentinger
Timothy Dues
David & Becky Dunn
Susan Durham
Liz Durham-Foye & Brian Foye
Janis Eberenz
Chelsye Embry
Ruth Ann Englert & Richard Vincent
John English
Rachel Firkins & Alicia Fireel
Greg Fischer & Alexandra Gerassimides
Dr. Anne Fitzpatrick & Dr. Robert Keeling
Jill Force & Patrick Mattingly
Jean Frazier
Garrett French
Dan Garst
Patrick & Andrea Gaughan
Stephen Gault
Jennifer Gebhart & Jason Cooper
Layla George & Michael Clark
Nicole & Ricky George
Heather Gilchrist-Campbell
Dr. Laman Gray & Julie Gray
Sanela Graziouse
Kathrine Grissom
David Grissom
Greg Grissom & Cindy Grissom
Mary Grissom & Joost Rosenbaum
Monica Guarnaschelli
Margaret Handmaker
Joe & Robin Harland
Michael Hayman & Leslie Pancratz
Helen Heddens
Caroline & Tim Heine
Chris & Sarah Hellman
Thomas Henrion, Jr. & Kelly Wright-Henrion
Chris & Marcia Hermann
Cindy Hettinger-Carcione & Raymond Carcione
Henry V. Heuser, Jr.
Paul & Regina Hirn
Amy Hirschy
Matthew & Ashley Iles
Paula & Stuart Jay
Tom & Julie Jessee
Matthew Johnson
Daniel & Lisa Jones
Mary & Stephen Jones
Richard & Anne Jones
Gary & Anne King
Jean Kreke
Mike Kuntz
Meredith Lambe
Diane Laughlin & Russ Neill
Holli & Eric Lewis
Philip & Susan Lynch
Stanley & Sally Macdonald
Robert & Lynn Macrae
Burwell Marshall
Dr. Nancy Martin & Dr. Fred Hendler
Dr. Augusta Mayfield & Timothy Welsh
Judith McCandless
Zach & Lindsey McClave
Martin McClelland & Lori Warren
Brandt McCool & Eve Samborn
Sandra & Stephen McCreary
Michael Alan McDearman
Kenneth & Mary McLeish
Stephen & Anna Lee Mershon
Creighton Mershon & Claire Alagia
Stephanie Mittel
Ronald & Debra Murphy
Ford Musselman
Stella Musselman
Daniel & Constantina Nall
John & Andy Neichter
Mary & Ted Nixon
Tom & Joanna Nugent
Conor O'Driscoll & Dr. Kimberly Boland
Donna Olsen
Scott Osborne
Carol Pye
Dale & Patricia Ralston
Anuj Rastogi
Earl & Bridgett Reed
Connie Reiser
Richard & Janet Rink
Clarence & Donna Rode
Smith Rodes & Chris Owen
Oliver Roe & Abby Shue
Steve & Kim Rogers
Jacqueline Rosky
Matthew & Grace Rutherford
Jon & Caroline Salomon
Terry & Anne Sams
Andy Scardino
Ute Schabel
Dr. Courtney Schadt & Brandon Schadt
Reverend Edward W. Schadt
Stephen & Katharine Schoening
Justin Schuhmann & Jennifer Chapman
Lee & Mary Schulz
Holley & Kenneth Schwieterman
Lisa Shields & Mark Boland
Jo Shipley & Ernst Traschel
Carl & Lisa Shishmanian
Dan & Ann Siebert
Martha Simione
Dr. Ruth Simons
Kennedy & Sara Simpson
Vertner Smith & Barbara West
Carolyn & Donald Snow
Keith & Jennifer Starr
Gail Stein
Allen & Sherry Steinbock
JC & Charlotte Stites
Mary Stites
Matt & Jena Stone
William & Dace Stubbs
Brad & Ann Swope
Deborah Taylor
Chris & Linda Valentine

2025 Olmsted Donors

Circles of Leadership cont...

David & Susan Vislisel

Adam Waldner

John Walsh

Suzanne Warner

Gus Wathen

Leigh White & Nikolay Denchev

Beth Wilkerson

Dr. Terry Williams

Keith Williams & Jackie Pierce

Robert & Shari Willy

Orme & Mary Wilson

Phoebe Wood

Edward & Cathy Zoeller

3rd Street Neighborhood Association

Augusta Brown Holland Philanthropic Foundation

Brown-Forman Corporation

Caterpillar Foundation

Churchill Downs, Inc.

Dean Dorton Allen Ford

Dentons Bingham Greenebaum

Edwards Family Foundation

E-Z Construction Company, Inc.

Give Lively Foundation

Glenview Garden Club Inc

Heaven Hill Brands

Humana, Inc.

JPMorgan Chase

Judge Family Foundation Inc.

Kentucky Select Properties

Koetter Group

Landrum Community Charities Fund

LG&E and KU Energy LLC

Limestone Family Foundation

Limestone Title & Escrow

Louisville Bicycle Club

Louisville Public Media

MSD

Norton Healthcare

PlayPros

Rainbow Blossom, Inc.

Republic Bank

River Road Asset Management

Riverside Paving

Salesforce

Samuel Lyon Charitable Foundation

Sazerac Company, Inc.

Second Street Neighborhood Association

Stegner Family Foundation

Stegner Investment Associates, Inc.

Sterling G. Thompson Co.

Studio Kremer Architects, Inc.

Taylor Siefker Williams Design Group

The Blankenship Tree Service

The Dow Chemical Company

The Gardner Foundation, Inc.

The Glenview Trust Company

Thompson, Miller and Simpson, PLC

Tito's Handmade Vodka

UofL Department of Biology

UofL Health

West Louisville Tennis Club

West Sixth Brewing

Whittenberg Construction

Trail Champions

Anonymous

Martha Alexander

Scott Barber

Susan & Kevin Borders

Lauren & Jeremy Briley

Maureen Carberry

Holly Cooper

Kerri Daly & Dave Haas

Dr. Anand Dash & Elizabeth Munnich

Janet Den Uyl

Dr. Shireen Deobhakta

Patrick Donley & Terri Burt

Vilma Fabre

Becky Greenlee

Dr. Ronald Gregg & Dr. Maureen McCall

Victoria Griggs

Cindy Grissom

Michael Gross

Kevin Grove

Larry Hayes

Lisa Huber

Jenny & Greg Johnston

Tracy Keller

Michelle King

Attila Krizsan & Orsolya Kanya

Daniel & Patti Meyer

Jean O'Brien

Beth & Douglas Peabody

Emillia Pelton

Dr. Patricia Purcell

Kelly Quade

Carrie & Ed Rankin

Sean & Rachel Reynolds

Jeannine Schaffer

Donald & Cathy Shoemaker

Teresa & Tom Storck

Jane Stosberg & Monica Mahoney

Karin Sturgeon & Peter Bassett

Melissa Yates & Peter Brondum

Bellarmine University

Highland Pres Weekday School Faculty and Board Members

Paypal Charitable Giving Fund

The Plant Kingdom

Tree Stewards

Anonymous

James Andrew

Waleed Bahouth

Eric Benmour

Kaye Bowles-Durnell

William & Linda Bowman

Keeling Brown

Dr. Walter Bruning

Al Burke

Helen & David Burkholder

Nancy Bush

2025 Olmsted Donors

Tree Stewards cont...

Bridget Carpenter & Michelle Simpson Carpenter

Mark Carroll

Bill & Sandra Carroll

Mike Chmilewski

Felipe Cisneros & Bonnie Feldkamp

John & Gretchen Clark

Jackie & Wes Cobb

Marian Cochiasue-Avery

Fred & Linda Cowan

Dr. John Crum

Paula DeMuth & Brian Shellum

Marie Dever

David & Frances Dick

Morgan Dunay

Bruce Ebanks

Tim Ebertshauser

John Eifler

Garry Embry

Todd Ethington

Mike Fine

Patrick Fitzgerald

Marty & Dee Ford

Frank Ford

Abby Ford

Lucy & Cooper Fox-Boots

Ed Garber & Sharon Lamb

Kurt Graeser & Janet Greaser

Christopher & Claire Greenlee

Jay Gulick & Mary Oliver Humke

David & Valerie Hall

David & Sarah Hardy

Jane Hardy & David Schmidt

Frederic & Mary Ellen Harned

Mr. & Mrs. Phillip Harrison

Samuel & Karen Harvey

John & Patrice Hayes

Judy Hayes & Mark Carew

Jason & Corin Hindenach

Darrin Hines

Mary Jane Hoben

Roger & Peggy Hoffman

Martha & Gregg Hovious

Judith Hunt

Stephen Imhoff

Carter Jay & Mark Lewis

Elizabeth Jenkins & John Ball

Helen Jones

Caitlin Joy & Dominique Betts

Christopher Keil

Raymond & Ann Kemper

Walter & Lynn Kunau

Greg Langdon

Christi Lanier-Robinson & Donald Robinson

Amy Lapinski

Philip & Debra Lichtenfels

Brent & Bonnie Logsdon

Margaret & Scott Luttmann

Henry Lynch

John MacLean & Maud Welch

Greg Maddox

Janine & Joseph Malone

Katherine Mapother

Dr. Mavin Martin & Neil E. Mellen

Kristin McCall

Lilly & Billy McGlone

Dr. Stuart Miles & Margaret Mealey-Miles

Joe Miller

Judy Morrison

Tom Musselman

Michelle Naiser & David Noe

Evan Nathan

Dennis Neyman & Ellen Ballard

Susan & Nick Nicholson

Holly Nolan

Lisa O'Guin & Thomas Hopkins

Sandi & Alex Otte

Lee Payne

Rita Peterson

Mark & Susan Pfeifer

Dr. Robert Powell

Dr. Kendall Purcell & Carson Stewart

Joseph Quinn

Ellen Radowski

Mary Mershon Reisert

John Reisert

Katie Reisz

Doug Rich

Steven Ricketts

Russell & Terri Saunders

Tom & Janie Scovil

Michael & Shannon Scroggins

Omar Shatara

William Sheehy

John Sheryak

Jerry Simms

Andrea & Cooper Sinclair

Kris & Wendy Sirchio

Dr. Timothy Spaulding

Margi & Bryan Sperry

Kendall & Irene Spyke

Nancy Stein

Garret Stone

Elizabeth Vail

Dr. Thomas Van

Lisa Wachs

John Wagner

Newby & John Walters

James Walters & Joyce Pressburger

Steven & Jenny Ward

Morgan Ward

Ted Wathen & Bridget O'Brien Wathen

Scott & Jill Wegenast

William & Patricia West

Patricia & Stephen Wheeler

Christopher & Laura Williams

Brad Wunderlich

David Zickel

Building Equal Bridges, Inc.

Carmichaels Bookstore

Coach Lindo Fitness And Field Hockey

Heritage Hardwoods of Kentucky

Jack Henry & Associates, Inc.

Morgan Stanley Wealth Management

Music Performance Trust Fund

2025 Olmsted Donors

Perennial Protectors

Anonymous
Zachery Abrams
Jerry & Madeline Abramson
Allison Adams
Ann Allen
Elmer Lucille Allen
Charles Ames & Amanda Graham
Laura Ammerman
Darsi & Mike Anderson
Pete Andriot
Carrick Arehart
David & Madeleine Arnold
Tawana Bain
Luke Baker
Dr. Barbara Baker & David Brown
Rick Baldwin
Robert & Mary Ballard
Amanda Barger-Williams & Jackson Williams
Bill Barloon
Ellen Barry
Erica Battaglia
Brandon & Brooke Bauer
Colleen Bell
Renita Bernat
Whitney Bianchi
Warren & Wanda Bilkey
Ethan Blackburn
Lauren Bland
Aline Blizard
Ashley & Natalie Bohn
James Boland
Rebecca Booth
Laura Bowen
Roger Bradshaw & Carol Mattix
Rachel Brand
Susan Brasch
Chris & Brigid Breetz
Darren & Jennifer Brey
Christine Brinkman
Frankie & Donna Brothers
Robert & Nancy Bruce
Tim & Amy Buckingham
David & Emily Buren
Matthew Burkley
Barbara Burrige
Melvin & Patsy Bush
Craig & Kathleen Cabezas
Haley Cade & John Hogg
Richard Campbell
D.T. Campbell
Jack Carlon
Dr. Margaret Carreiro
William & Kathy Cary
Heather & Christopher Caudill
Carole Christian
Lynda Clark & Mark Willmoth
Hannah Cobine
Theresa & Robert Connolly
Amy Cooksey
Milton Cooper
Dr. Kathy Corbett
Alison Cromer
Charles & Mary Cronan
Nancy Crowe
Langdon Crump
Elise Crump
Marc & Lisa Crutcher
Cassandra Culin & Kyle Ellison
Irwin & Carol Cutler
Joseph Daley
Hallie Decker
Paul Despain
William & Sally Dillon
Scott Dingle
Kate Dittmeier Holm
Martha & Christopher Dolan
Keith & Donna Easton
Diane Ebel
Mark Edelen
Marshall Eldred, Jr.
Barbara Elliott
Will Elpers & Gabi Martinez-Horta
Mitchell Evans
John Evers
Lisa Ewen
Mary Fallot
Estee Faranda
John Fauver
Mark & Ann Fenzel
Patrick Fette
Adam Fields
Trisha Finnegan & Daryn Demeritt
M. Lynn Fischer
Lori Flanery
Brian Fleck
Catherine Ford & Everett Hoffman
Jenny Forseth
Robert Foshee
Christopher Fuller
John & Julie Gahm
Gordon & Joyce Garner
LaMar Gaston
Kathleen & Stephen George
Jessica George & Nancy Schoenhoff
Charles & Gena Gerth
Jim Gibson & Glen Elder
Peter Gigante
Christopher Glasser & Maggie Mangino
Julie Goldman
Jennifer Goodman
Olivia Goodwin
Sloane & Heather Graff
Edward Grantz
Steven Gray
Lorri Grueber
Todd & Leah Gruenig
Maria Gurren
Liz Haas
Christopher & Beth Haas
Bethany Halasz
John Hamilton
Carla Heck
Teresa Heintzman
Lucy Helm
Paul & Michael Herberg

2025 Olmsted Donors

Perennial Protectors cont...

Annie Herbert & James Dow
Erin Herbert
Thomas & Amy Herman
Sylvia Holden
Howard Holloman
Marianne & David Hopewell
Hollie Hopkins
Larry Hopkins & Catherine Bohler
Derek Howard
Thomas & Patrice Huckaby
Henry & Teresa Hunt
Barbara Isaacs & Sidney Hymson
Julie James
Jessie & Kevin Jewell
Fred & Laura Johnson
Louis & Kelly Johnson
Gary & Margaret Jolly
Julie LaValle Jones
Frances Jones & Ralph Letizia Jr.
Charlotte Jones
Catharine Joret
Micah Jorrish
William & Barbara Juckett
Susan Kaiser-Chrisman
Clay & Crystal Kannapell
Linda & Fred Kapp
Christina Kayrouz
Barry & Octa Kellond
Ben King
Christopher Klein & Erin Burke
Todd Klinglesmith
MaryLauren & Adam Knadler
Kathryn Knotts
Mary & Don Korfhage
Edwin Krebs & Susan Hamilton
Ed Krebs & Susan Hamilton
Edward Kruger & Jeff Rodgers
Harriet Lair & Barry Younkie
Laura Landenwich & Andrei Moldoveanu
Sarah Landes
Dr. Ronald Lehocky
Lynda & Richard Lewis
Louis & Terry Lindsey
David Lipp & Laura Metzger
Steven & Judith Lippmann
Joshua Lubarsky
Michael & Laura Lucchese
James Luckett
Lynne & Jerry Lyndrup
Barbara MacDonald
Joan MacLean
Sharon Magnus
Bob & Bo Manning
Connie Marrett
Raymond & Martha Martin
Alex & Stephanie Mason
Tim & Dair Mathistad
Amy McClain
Kitty & Mike McKune
Katie & Michael Meador
Susan & Bob Means
Nannette Mershon
Donna Miller
Timothy & Genevieve Montgomery
Guy & Elizabeth Montgomery
R. Charles & Sally Moyer
Joseph Mudd
James & Emily Mueller
Pat Mulloy
Sybil Murphy
Tad Myre
Julie Namkin & Greg Singlust
Mary Nash
Benjamin & Kelly Neat
Rachel Neeld
Dr. Nancy Newman & George Boatwright
Sallie & John Niehoff
Emily Nolan
Carol Nussbaum
Brian & Clare Olberz
Amin Omidy
Ellen Oost
Tabb Ormsby
Monica Orr
James Owens
Diane Partridge
Tricia & Chuck Patton
Corinne Peabody-Patterson
Jessica Pendergrass
Gary & Margaret Pennington
Larry Pierce & Constance Story
Cindee Quake-Rapp & Mitch Rapp
Ann Lawrence Ramser
Tom Ranz & Bill Trent
Bernard & Elizabeth Rapp
Tracy Redmon
Rebecca Reed
John Reeves
Dr. & Mrs. Bill Renda
Chance Reynolds
Steve & Dawn Riester
Tom Rieth
Lynn Rippy
James & Sebree Rizzo
Mark Robinson
Sarah Rogers
Brian Ross
Siofra Rucker
Rosella Rudd
George Rue
David & Claudia Runge
John Russ & Cheryl Ungerleider
John & Mary Russell
Larry & Florence Saltzman
Barbara Sandford
Richard Sands
George & Beverly Santamouris
Jenée & Krishnan Sastry
Jason Sauer
Mary Saunders
Karen Schoenbachler
Ray Scholtz
Susan Schroerlucke
Sharon & Brent Schuster
Amelia Sebastian

2025 Olmsted Donors

Perennial Protectors cont...

Nick & Lauren Selman
Gregory & Karen Shade
Robert Shader
Ellen Shapira
Eric Shaw
Robb & Anna Shrader
Trisha & Eric Siegelstein
Daniel & Adrienne Simon
Leslie Smart
Larry Snyder
Alex Spurrier & Samantha Smart
David & Rachel Stack
John Stafford
Michelle Staggs
Barbara Stetson & Paul DeMarco
Sam Stewart & Sarah Daley
John Stough
Ann & John Stromberg
Sue Stuhl
Vincent Tanamachi
Lloyd & Katherine Taustine
Adeline Thaler
Andrew Thiesing
Stephen & Sandra Thomas
David & Liane Thompson
Gerald & Dana Thornberry
Stephanie & Kirkby Tittle
Barbara Trompeter
Bart Turney
Melanie & Channing Twyman
John Uhl
William Usher
Thorne & Sally Vail
Michael & Kelly Valenti
Valerie Vanderlip
Joseph Vap & Melissa Wines
Barbara Varclay
Christine Wade
Venda Walter & Thad Druffel
Major Waltman
Megan Ward & Scott Barber
Zach Wardlaw

Eddie & Beth Welch
Maureen Welch
Alice Wells
Holly Weyler
Dr. Bruce & Lora Whearty
James & Vickie Wheatley
Tressa Whittington & Kory Wallinga
Mary Ellen Wiederwohl
Anne & Jim Wilhelmus
Vance Willey
Lawrence Williams
Jim & Claire Williams
Lucy & John Williams
Maria Wimsatt
Matt & Elizabeth Winkler
Archie Lynn Womack
Richard & Rebecca Wood
Sarah Yost & Brian Phillips

Attention in NeuroDivergent Lab
B. Travis Newman, Attorney at Law
CBRE
Ernst & Young LLP
Friends Of Central Park
Julie Pogue Properties
Kroger Community Rewards
Parker & Klein Real Estate
Rambler Garden Club
Robert Half Corporation
Shelby Park Neighborhood Association
Sojourn Church Midtown
The Caroline Christian Foundation, Inc.
The Nevermore
W. W. Norton & Company
Wine Tasters - Fundraising

Woodland Guardians

Anonymous
Leslie Greenbaum
McCauley & Grant Adams
Ann Adams
Cynthia Adelberg

Thomas Albrektson & Brittany Lenihan
Mary Alexander
Lauren & Nathaniel Alexander
Vernon Ambrose
Lisa Ammon
Jack & Susan Amundsen
James & Danna Arnett
Michael & Catherine Arnold
Omar Attum
Jim Aubrey
Michael & Patricia Ayers
Robert & Judith Ayotte
Dennis & Judith Babcock
Debra Baciocco
Rick Baechtel
Dr. Soon Bahrami
Rhonda Baker
Lindon Ball & Amanda Fowler
Thomas & Marjorie Barrett
Susan Barry
Julie Bartlett & Michael Kurowski
Hal & Kathleen Baumann
Richard & Lucretia Beatty
Chris Beaulieu
Gary & Christina Beavin
Patti Bell & Jeane Hanley
Linda Bell
Olivia Beneke
Robert Bennett
Stephen & Sharon Berger
JT Bergman
Brooke Beyerle & Mary Rose Beyerle
John & Judy Bidwell
Ayrca Bishop
Scott Bishop
Beth Bissmeyer & Anthony Hammond
Brian Bivens & Amy Hurd Bivens
Jill Blackwell-Young
Katie Blevins
Thomas Block

2025 Olmsted Donors

Woodland Guardians cont...

Kris & Alicia Bloos
Robert & Michele Blum
Dr. Anne Bobigian
Sherry & Mike Boesch
Molly Boland & Mark Zdobyak
Robert Bonn & Laura Roth
Cornelia Bonnie
Edward Borah
James Bosley
Carol Bottoms
Peggy Bowling
Mark Bowling
Kevin Boyd
Jason & Maurie Bradley
Mary Brady
Ashley Brandt
Cecil Brewer
Nicole Breyette & DJ Biddle
Charles Brian & Deborah Starr Lewis
Jay & Laura Brock
Carolyn Brooks & Peter Morrin
Mac Brown
Campbell Brown
Betty Brown
Tabi & Mike Brown
Ray Brundige
Andrew Bryant
Michael & Rebecca Buckler
Jane Burbank
Blakely Burger
Katherine & Jared Busch
Stephen & Katie Bush
Vicki Buster
Craig & Tomese Buthod
Charlotte Caldwell
David & Sally Campbell
Gregory Campbell
Gerald Carlon
Manuel Carralero
Angie Carraro
Leah Carreon
Charles Cash
Anna Cassaro
J. Peter Cassidy
Lisa Causarano & Keith Morley
John & Jane Chamberlain
Gerald & Dorothy Chambers
Janet Chatham
Andy Christ
Teresa Christensen
Patti Clare & Jack Trawick
Denise Clark
Keith Clements
Julie Clinkingbeard
Corey Cohen
Marland Cole
Chelsea Collard
Chapin & Dana Collins
Gregory Conley
Donna Constant
Angela & Jackson Cooper
Robbie Cooper
Jill Cooper
Phillip & Stephanie Copeland
Todd Corley
Parker Cox
Cat Crawford
Sue Crecelius
Bonnie Cress
Ben Cress
Virginia Cromer
Karen Cronan
Kathy Jo Crooks
Matthew Cuculic & Danielle Kidwell
Cuculic
Alice Culin-Ellison
Melissa Cunningham
Rhonda Curry
Rachel Cutler & Curtis Stauffer
Lee Daley
Amelia Dauer
George W. Davidson
Karen & Rick Davis
Andrew Davis
Denise & Daniel Davis
Kelley & Bruce Dawkins
Deidre Dawson
William & Karen Dean
Ted Dean
Lukas & Gabrielle Delaney
Laurel Deppen
Marie Dering
Jennifer Ditty Kang
David & Sarah Doolittle
David & Heather Dowdell
Doug Draper
Joe Duane
Amie & Benji Durden
Roger Dutschke
Jordan Dye & Dr. John Shealy
Brian Eaton
Michael Edgerly
Montgomery Egart
Stephen Eifler
Clifton & Meghan Elliott
Margaret Ellis
Hiram & Teresa Ely
Sarah Erny
Wilson Ethington & Nicole
Humphrey
Kathy & Tom Ezzell
Tiffany & Ron Fabing
Anne Faulls
Melissa Faurest
Laura Ferguson & Michael
Bowen
Salena Filichia
Anita Finley
Carolyn Fisher
John Fitzgerald
Phyllis Fitzgerald
Pamela Fitzgerald
Elizabeth & Daniel Fitzgibbons
Bill & Georgia Flarsheim
William Flowers
Margaret Flowers
Timothy Foree
Mark Forman
Hugh & Kathryn Foshee

2025 Olmsted Donors

Woodland Guardians cont...

Clyde & Betsy Foshee

Gregg & Leslie Fowler

Todd Frakes

William & Ilona Franck

Janice Francois

Toby Freese

Beth Freibert

Cheryl Froula

Dr. Aretha Fuqua

Melissa Fuqua

Jennifer Fust-Rutherford & Oliver
Rutherford

Robert & Laura Gaeta

Beth & Jack Gallagher

Ronald Gallo

Michael Galutera & Zanya Rabara

Mark & Susan Ganchiff

Diana Gautier

Stephanie George

Erik & Kari George

Linda George & John McGeeney

Carole Sue Gerstle

Courtney & Terri Giesel

Lyndsey Gilpin & Eric Dixon

Rhonda Goben

Michael Gold & George Polur

Tiffany Gossett

Jeff Gossett

Jeffrey & Cristin Gough

Grace Goulson

Susan Grady

Bob & Lynn Graham

Chelsea Granville Reed

Angel Graves

Kimberly Greene

Mitchell & Jennifer Greenfield

Terra Greenwell

Pamela Greenwell & Michael Rodgers

Jerry & Anne Greenwell

Laurie Gregory

Katherine Groemling

Jeanne Groene

Linda Gugin

Holly Gustafson

Becky Guthrie

Andrew & Gabriel Habeeb

Mitchell Hadley & Noah Smith

Terence & Susan Hadley

William Haefling

Andrew Hagerty

Kim Halbauer

Adam Hall & Daniel Gilvin

Basil & Harriet Hall

Ann & Jack Hall

Philip & Mary Louise Hambrick

Debbie Hamilton

Will Hammel

John & Lee Hancock

John & Suzanne Hanks

Angela Hapner Musk & Jason Hapner

Christopher & Patricia Haragan

Natalie Harris

Frances Haselden

Dan Hawk

Joseph Haydon

Lisa & Jim Heffley

Steve & Camy Heine

Hunt Helm & Kay Stewart

Jesse & Jamez Hendrix-Inman

Jonathan & Lesley Henney

Jean Henry

David & Sharon Heverin

Jerry & Cathy Hicks

Walda & Jim Highfield

Fred & Mary Holden

Bill Hollander & Lisa Keener

Kathryn Holmes & Will Bell

Spencer Holt

Christopher Hopewell

Jerry & Suzanne Hornung

Winifred Hoskins & Kerk Fisher

Karen Howe

Mike Howell

John & Nancy Hubbard

Robert Hughes

Ellissa Hunt

Sandy Immerman

Nelson Jackson

Kirt Jacobs & Cynthia Fanning

David & Michelle James

JoAnn James

Mimi Janson

Janet Jernigan & Frank Heft

Michael & Catherine Johnson

Clark Johnson & Diane Pecknold

Ben Johnson

Taylor Jolly

Karen Jones

Ron & Judy Jones

Dr. Ann Laird Jones & Mike
Caulfield

Anne & Fred Joseph

Michelle Kannapel

Gerald & Sharon Karem

Tracy Karem

Kenneth Karem

Ryan Keith

Mark Kelley-Matthews

Mary Kemper

Brendan & Keri Kennedy

Tom & Di Kerrigan

Ron & Jeanine Kiecana

Terry King

Katherine King

Briana Kinlead

David & Diane Kissel

Mary Klapheke

Craig Klusman

Sara Kmack & Guy Paquette

Janet Knaster

Jodie Koch & Julia Purcell

Glenn Koestel

Robert & Marjorie Kohn

Ellen Kokinda

Laura Kolaczek

Avery Kolers & Karen Christopher

Sherry Kosinar

Lydia Kowalski

Forrest & Mary Julia Kuhn

Robert Kulp

2025 Olmsted Donors

Woodland Guardians cont...

Michelle Kurland
Stephen & Susan Kute
Dwight Kyle
Tim Lally
Amy & Matt Landon
Jeffery Lanzet
Eric Larsen
Susan Lawler
Chance Le Meur
Thermos LeBoeuf & Jenni Kipfer
Amanda Ledford
Bernard Leeds
Brian & Jamie Levine
Joshua & Rebecca Longenecker
Kristin & Steve Loomis
Karin Lowenthal
Jason Lucke
Ella Lumpkins
Rebecca Lysohir
Lauren Madden
Daniel Makela
Steven & Martha Makela
Martha Makela
Michael & Caitlin Maloff
Michael & Missy Maloney
George Mangold
Lloyd & Janet Markland
Beverley Marmion
Lynn Marple
Jason Marshall
Pam & Jim Martin
Boyce & Melea Martin
Jerry & Martha Martin
Walter & Eva Mastropaolo
Mike & Stephanie Mattingly
Michael Mawood
Harriet Mays
Tamara Mazzoccoli
Katrina McBride
David McCay
Suzanne McCormac
Melanie McCoy
Angie McDonald
Lucy McElroy
Kathryn McFadden-Riddle
Alex & Iain McGhee
Kevin McKeel
Linda Mckinney
Anne McKune
Dr. John McLeod & Dr. Mary Hora
Erin Medina & Ryan Goltry
Ruth Meers
Dr. Kathryn Mershon & Dr. Todd Gardner
Gary & Gail Michael
Charles Miesner
John Miles
Bell Miller
Danielle Miller
Cathryn & Jonathan Miller
Paula Mock
Justin Mog & Amanda Fuller
Nathan Montgomery
Molly Morand
Raymond Morris
Nick Morris
Michelle Morris & Richard Vincent
Ella & James Morris
Eva Morse
Liz Mortenson
Michael Moser
Jagadeesh Movva
Sidney Murphree & Diana Irvin
Jeff Nally
Gretchen Nash-Gardner
John Nation
Kelsey Nestor & Nick Allardyce
Gayle Newcom
B Travis Newman
William & Laurie Newsome
Martha Nichols
Larry Nix & Ruth Garvey-Nix
Mike & Holly Norman
Bernard & Deborah Novgorodoff
Michael & Frances Oakley
Phyllis O'Dea
Deena Ombres
Jon & Marie O'Neil
Brooke Pardue
Djenita Pasic
John Pass
Scott Payne
Jillian Pearsall
Penny & Robert Pearson
Geoffrey Pearson
Eli Pendleton
Amanda Pendley
Patricia Perryman
Joseph & Terri Phelps
Karen Philley
Patrick & Renee Pierce
Mary Leigh Pittenger
Alan Plattus & Nancy Berliner
Mary Lauren Pohl
Noah Polk
Andrew Pomerville
Nathaniel & Mary Poor
Sara Pottschmidt & John Lisherness
Priscilla Rao
Mark Raque
Anne Ray
Buddy Ray
Martin & Felicia Ray
Dr. Anne Raymond
Cindy Read
Veena Reddy
Sarah Reed
Mike & Vickey Reed
Anne Marie Regan & Doug Magee
Mark & Jo Ann Reilly
Jarod & Katherine Richards
Joan Richert
Eugenie Riney
Rachel Roarx
Jay & Morgan Robertson
William Robertson
Bob Roby & Glenda Roby
Martin & Anne Rockwell
Maria Rodriguez

2025 Olmsted Donors

Woodland Guardians cont...

David & Joy Roelfs	Craig & Jenny Siegenthaler	Patricia Thomas
Katherine Rogers	Shaun Siers	Frances Thompson
George Rogers	Robert Simpson	John Thornberry
Heidi Rogers	Jeff & Hollis Simpson	Robert & Priscilla Tillett
Ashley Roller	Mandy Simpson Marler	Holly Tincher & Todd Leatherman
Pauline Ronald	Emily & Chad Singer	Vonnell Tingle
Rio Ross	Jessica & Greg Singleton	Terry & Debbie Tinker
Robert & Mary Rounsavall	David Sipes	Yani Tomlin
Taylor Routh	Gail Slaughter	Gerald & Carol Toner
Matthew Ruben & Michael Rohner	Jodi Smiley	Wave & Brenda Townes
William & Judy Rudd	Ted Smith	Bryan & Ruth Trautwein
Melanie Rudolph	Patrick Smith	James Tretter
William Rue	Mary Jo & Gray Smith	Alexander Turman & Angela Sanders
Madelaine Ruggles & William Reis	Ashley & Nathan Smith	Chad Turner
Betsy Ruhe & Joseph McNeill	Dr. Lena Snyder	Rosey & Gary Turner
Gregory Rush	Whitney & Trevor Soergel	Heather Turner
Dr. Brian Sajko	Sumit Som	Jane Tyler
David Salahshor	Steven Spalding & Leslie Friesen	Gwathmey & Ginny Tyler
Elizabeth & Chi Savells	Matt Spalding & Lucy Brown	Jeffrey & Tina Uhling
Katherine Scalf	Andy & Mary Spanyer	Mary Underwood
Paul Schardein	Bernard & Kathleen Speevack	Sarah Valentine
Arnold & Martha Schecter	Lucy Spickard	Lani VanderToll
Erin Schepman	Emily Sprawls	Linda Vasse & Kathy Cameron
Mark Schipp	Kristen Staab	Jacob Vaughn
Joseph Schnaudt	Deborah Stallworth	Alan Veal
Katherine & Paul Schneider	Jeff Starke	Michael & Patricia Vetter
Margaret Schoenhoff	Angie Starling	George & Laurie Vieth
James Schorch	Joetta & Alan Lawrence Steinmetz	Scott Wade
Gina Schroder & Gary Schroder	Forrest Stevens	Casey Wagner
Stephen Schulz	Nancy Steverson	Dylan Wagner
Steve Schumacher	Zac Stout	Tom Wakefield
Alice Schweri	Victoria Strange	Curt & Danielle Walker
Britt Scott	Jackie Strange	Jerome & Annette Walker
Rachel Segretto	Anita Streeter	Joseph Walker
Buddy Sergesketter	Kathy Sullivan	Geoff Wallace
Katie Shanahan	Mary Sullivan	Jane Walsh
Corey Shapiro	Laura & Michael Sutton	Henry & Alice Walter
Penny Shaw & Lee Deters	Al & Beverly Sweeny	Amy & Michael Washburn
Caitlin Shearer	Ann Swope	Alvin & Sally Wax
Megan & Andriy Sherehiy	David Tachau & Susannah Woodcock	Robert Webb
Diane Shott	Harriet Teller	Merleta Weisert
David Shulhafer	Ellen Thimme	

2025 Olmsted Donors

Woodland Guardians cont...

Clark Welch
Jane Feltus Welch
Jeremy Wells
Edith Wells
Matthew Whisman
Mike & Ruth Ann Whitehouse
Bobby Whitmer
Tyler Whitty
Norma Wiebe
Cora Wigger
Nicholas Wilkerson
Nancy & William Wilkinson
Kelly Wilkinson & Abby Long
Evelyn Wilkinson
Charles Williams
Charlie & Mary Williams
Bronwyn Williams & Mary Brydon-Miller
Bill & Nancy Williamson
Ward & Kaylen Wilson
David & Joan Winkler
Sue & Claude Wise
Barbara Woerner
Ben Wolff
Elizabeth & Ed Wong
Frank & Keitt Wood
Susan & David Wood
Thomas & Nancy Woodcock
Grace Wooding
Adrienne Wright
Robin Yacovetta
Todd Yates
Roxanne Yeoman
Deborah & Robert Yocom
Michael & Patricia Yost
Greg Zahradnik
Laura Zierer
Margaret Zurkuhlen

ADP
Atomic House of Hair
Baird Foundation
Beargrass Thunder
Constellation

CVS Health
Deckel & Moneypenny
Hearst
Old Louisville Jiu Jitsu
RacePenguin
Republic Bank Foundation
Sisler Maggard Engineering, PLLC
The Breeze
The Post
Toasty's Tavern
US Bank Foundation

Park Lovers

Anonymous
Jennifer & Michael Ackerman
Sharon Adams
Lori Allen-Kelly
Tracy Ander
Alexis Anderson
Maurice & Laurie Archer
Dr. Joe Arterberry
Allan & Elsie Atherton
Jared Auton
Melissa Bailey
Mary Jane Baker
Becca Baker
Ellen Baldwin
Alan & Ramona Ball
Karina Barillas
Ben Basil
Carrie Bauer & Meranda Phillips
Bauer
Kristen Becht
Emma Beck
Lorne & Jennifer Belden
Nathan Bellinger
Macy Berghoff
David Berman
Joanne Berryman
Tracy Billing
Thomas Bittorf
Clarence Bland
Matthew Blandford

Ann Blieden
Ann Blum & James Watson
Mary Hannah Blyther
Victoria Boggs
Nicholas Braden & Kristin
Munro-Leighton
Tiffany Brandt
Jacqueline Braun
Robin Bray
Leslie Brown
Mary Beth & Mary Brown
Katherine Bulinski
Mr. & Mrs. Brian Bunger
Don Burch
Erin Burke
Tricia Burke & George
VanArsdale
Leigh Anne Burke-Schaad &
Greg Schaad
Alyssa Burton
Sara & Daniel Callaway
Janet Calvert
Carol Carrasquer
Lola Carroll
Gregory & Mary Cecil
Aziz & Suzanne Chami
Keith Chasteen
Linda Christopher
Ethan Clark
Melanie & Rowan Claypool
Julia Coash
David Collins
Sharon Connors-Krauth
Bridget Coraz
Daniel Corrigan
Wende Cosby
Phyllis Costello
Elana Crane
Ben & Carrie Craven
Francesca Curry
Carol Curtis
Allison Cuyjet
Clay Dalton
Emily Daunhauer

2025 Olmsted Donors

Park Lovers cont...

Martha Davis
Natalie Davis
Marie Davis
Kay Dean
Robert & Ann Decker
Stephen & Sara Deetsch
Katy Delahanty
Jen DeLeeuw
David & Ann Derrick
Audrey Deterding
Debra Douglas
Kathryn Dunlap
Leah Dunn
Tina & Stephen Dusza
Whitney Eberenz
Adrienne & David Eisenmenger
Dom Elpers
Nikki Emory
Timothy England
Peter & Cathy Ervin
Sally Evans
Henry Evans
Emily Ewing
Charles & Marcia Fassler
Charles Fassler
Rachel Fautz
David Feldkamp
Brian Fell
Deanna Figg
Stuart & Diane Fink
Tom & Patricia FitzGerald
David Fitzgerald
Drew Foley
Mary Anne Fox
Alyssa French
David Fuchs
Anthony Galasso
Anne Garvey
Lorraine Gavin
Ingrid & Lewis Gentry
Christopher Gilbert
Stuart & Linda Goldberg
Jerry Gomez
Robbin Goodin
Herbert & Patricia Gousha
Chris & Christina Graney
Jayme Grim
Stephen & Laurie Grimes
Morgan Grubbs
Paul Gruner
Amy Haley
Martin Hall & Susan Sawning
Jennifer Hamm
Joshua Hancock
Elizabeth Harlan
Maggie & Brian Harlow
Kacey Harmeling
Amy & Chad Harned
Casslyn Harris
William & Jerry Harrison
Laura Hartford
Phyllis Hawkins
Charles Hellmann
Erik Helton
Lauren Hendrickson
Kristin & David Higdon
Amelia Higdon
Toni Hinshaw
Aubrey Holle
Julie Hornsby
Mary Kay Houck
Dwayne Hunt
Gretchen Hunt
Barbara Hurt
Nadine Jacobsen-McLean
Megan James
Elizabeth Jent
Tiffani Jett
Ross & Shauna Johnson
Jed & Penny Johnson
Tracy Jones
Laura Jones
Anastasia Kaufmann
Vanessa Keenan
Annaliese Kerman
Stephen & Stephanie Kertis
Megan Kirchof
Gwenn Knight
Walter Kruger
Banjed Labrador
Karen Larkin
Betty Lasley
Jeanette Lee
Sharon Leightty
Jeremy Leitner
Dafferé Leslie
Heather Levitch
Annie Likins
Edward & Diane Lloyd
Susan Maguire
Katherine Mason
Lorraine Mathews
Andrew Matthews
Eric May
Catherine McBride
Maria McCauley
Adele & Bradford McCoy
Ashley McDonald
Douglas Meadors
John & Melody Medley
Melissa Mershon
Katie Meyer
Charley Miller
Rebecca Minnick
Gail Minotti
Michael & Victoria Moll
Emily Monarch
Erin Moody & David Metcalf
September Morgan
Jill Morzillo
James & Donna Mudd
Robert Mudd & Sara Whitham
Jennie Mulhall
Judy Munro-Leighton
Erin Murphy & Daniel Makela
Rachel & Jason Nally
Sharon Obenauf
James O'Connor
Joanna Ohlendorf

2025 Olmsted Donors

Park Lovers cont...

Dr. Mesude Ozyurekogl
Melissa Packwood
LaWanda Page
William Paine
Mark Parrish
Kyle Partin
John Paul
Alicia Pedreira
Margaret Pennington
Prasanthi Persad
Laura Pinkerton
Elizabeth Porter
Sondra Powell
Delores Pregliasco
Dr. Denise Puthuff & John Timmons
Laura Raap
Kaylee Ratliff
Morgan & Chris Reitz
Darrin Riddle
Kate Roselle
Donald & Norma Routt
Barry & Carrie Row
Noel Rueff
Stephen & Pamela Ryan
Jason Saavedra
Louise Sachs
Kara Salsman
Philip Samuel
Charles & Stephanie Sarasohn
Barbara Schmall
Erin & Scott Schneider
Susan Schroader
Eric Schulz
Dusty Segretto
Derek Selznick
Mary Semenza
M. Thurman Senn
Dave & Mary Jane Shadowen
Tyece Shelton
Willow Short
Jennifer Siegenthaler
Nate & Sarah Simon
John Sistarenik Jr.
Steven Skaggs
Daniel Slaski
Kevin Smith
Jeffrey Smith & Anne Steinbock
Smith
Ralph & Elise Snowberger
Audra Sommer
Jennifer Starr
Rosslyn Steinmetz
Claude Stephens & Erin Henle
Kristiana Stevenson
Michael Storm
Ann Sullivan
Cindi Sullivan
Edgar Tan
Allan & Cathy Tasman
Jacob Taylor
Shelby Taylor-Schroder
John & Ruth Teeple
Scott & Kristin Terrill
Andrew Thai
Angelica Thompson
Paul Tigue
Kathryn Tillett
Lacey Trautwein
Andrew Tsapatsaris & Danny Gaddie
Joyce Van Berkel
Elizabeth Vasquez Fehler
Alex Vega
Missy Vella
Ryson Walden
Charles Walker
Janice Walter
Susan Ward
Carolyn Waters
Jeanette Waters
Barbara Watts
Suzanne Webb
Matt & Kristin Weirich
Steven Whoberry
Janelle Wilhelm & Isaac Marvel
Bridgette Wingate
Leigh Winnicki & David Lincoln
Martin Woerner
Thomas Wojcicki
Sarah Wolff & Rusty Sohm
Julie Wunderlin
Brandi Yoder
Edward Yoder
Joel Zakem
Heather Ziebell
Martha Ziskind
Battelle
Fincastle Chapter NSDAR
River Metals Recycling
Signarama Downtown



OLMSTED PARKS CONSERVANCY

1299 TREVILIAN WAY · LOUISVILLE, KY 40213
 T: 502-456-8125 · F: 502-456-8162
 INFO@OLMSTEDPARKS.ORG

