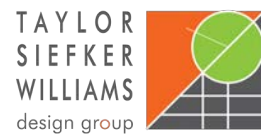




OLMSTED PARKS CONSERVANCY

BEARGRASS PRESERVE

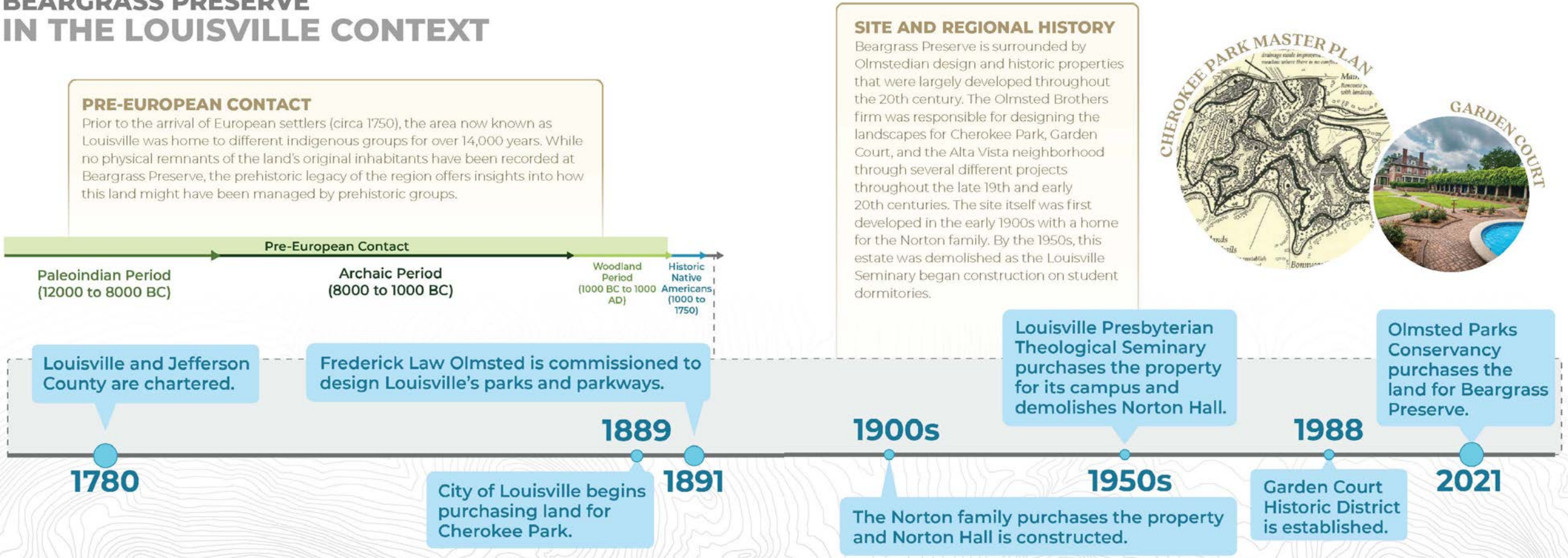


SITE



HISTORY

BEARGRASS PRESERVE IN THE LOUISVILLE CONTEXT



PROCESS

STYLE



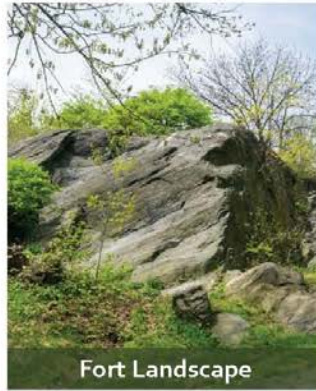
East Meadow

SCENERY



77th Street Bridge

SUITABILITY



Fort Landscape

SUBORDINATION



Bethesda Terrace

SEPARATION



Conservatory Gardens

SANITATION



Loeb Boathouse

SERVICE



The Reservoir

Embrace the natural green.

"Designing in 'Pastoral' style of open green space, small bodies of water and scattered groves or in 'Picturesque' style with profuse planting on steep and broken terrain."

Stay true to the given space.

"Designing for the 'passages of scenery' even in the small spaces and in areas intended for active use. Creation of designs that give enhanced sense of space."

Respect the natural setting.

"Creation of designs that are in keeping with the natural scenery and topography of the site: respect for, and full utilization of, the 'genius of the place.'"

Keep overall design simple.

"Subordination of all elements, all features and objects, to the overall design and the effect it is intended to achieve. The 'Art to conceal Art.'"

Make sure there is purpose.

"Separation of areas designed in different styles, so that an 'incongruous mixture of styles' will not dilute the intended effect of each."

Achieve function over flash.

"Provision for adequate drainage and engineering considerations, not simply arranging of surface features: promoting both the physical and mental health of users."

Aim to make a better place.

"Planning of designs so that they will serve a 'purpose of direct utility or service;' that is, will meet fundamental social and psychological needs."

PROCESS

LEARN

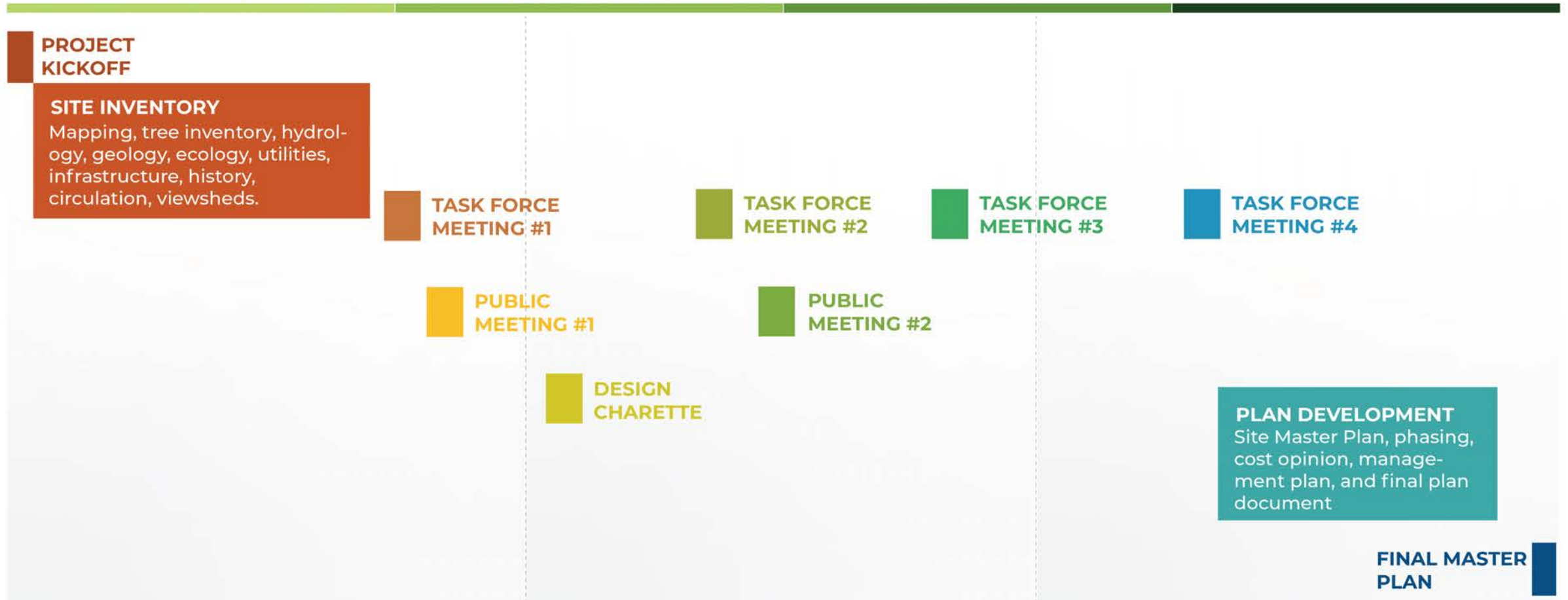
INVENTORY & ANALYSIS ● ● ●

DREAM

CONCEPT DEVELOPMENT ● ● ●

GROW

FINAL PLAN DEVELOPMENT ● ● ●



LEARN PROCESS

1

INVENTORY

COLLECT RELEVANT DATA

PAST
DEVELOPMENT
RESEARCH

SPATIAL
DATA ANALYSIS

RAPID SITE
ASSESSMENT

TREE INVENTORY



2

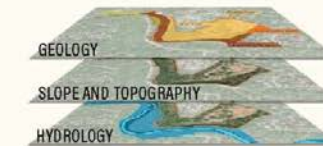
ANALYSIS

SYNTHESIZE INVENTORY
DATA TO UNDERSTAND THE
WHOLE SITE.

CONTEXTUAL CONDITIONS



PHYSICAL CONDITIONS



BIOLOGICAL CONDITIONS



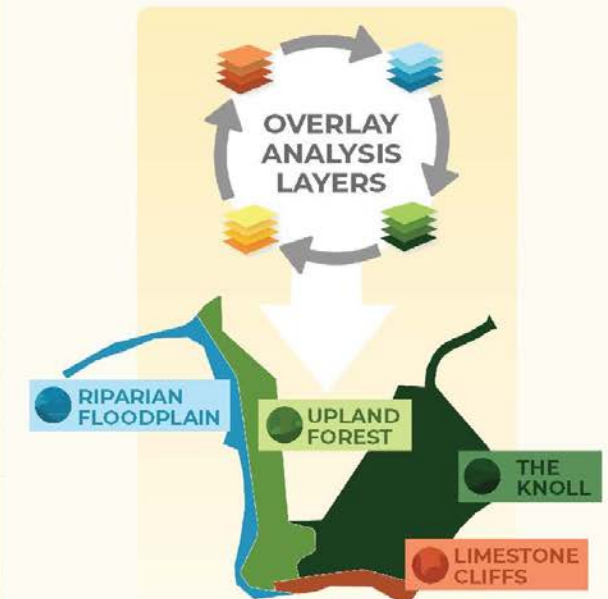
FUNCTIONAL CONDITIONS



3

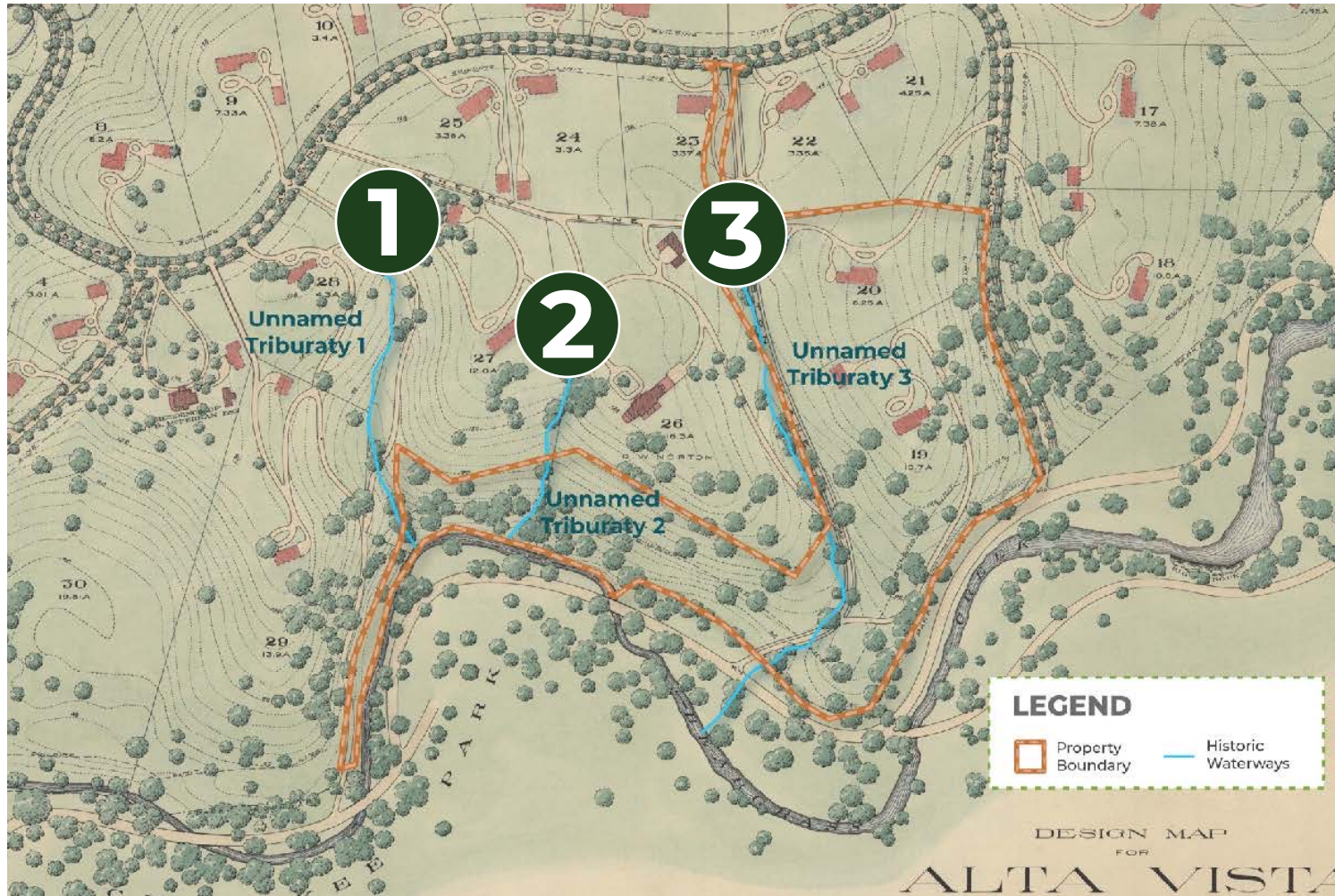
LANDSCAPE ZONES

USE ANALYSIS TO
IDENTIFY **FOUR**
DISTINCT LANDSCAPE
TYPES.



BEARGRASS PRESERVE MASTER PLAN | 15

SITE ASSESSMENT

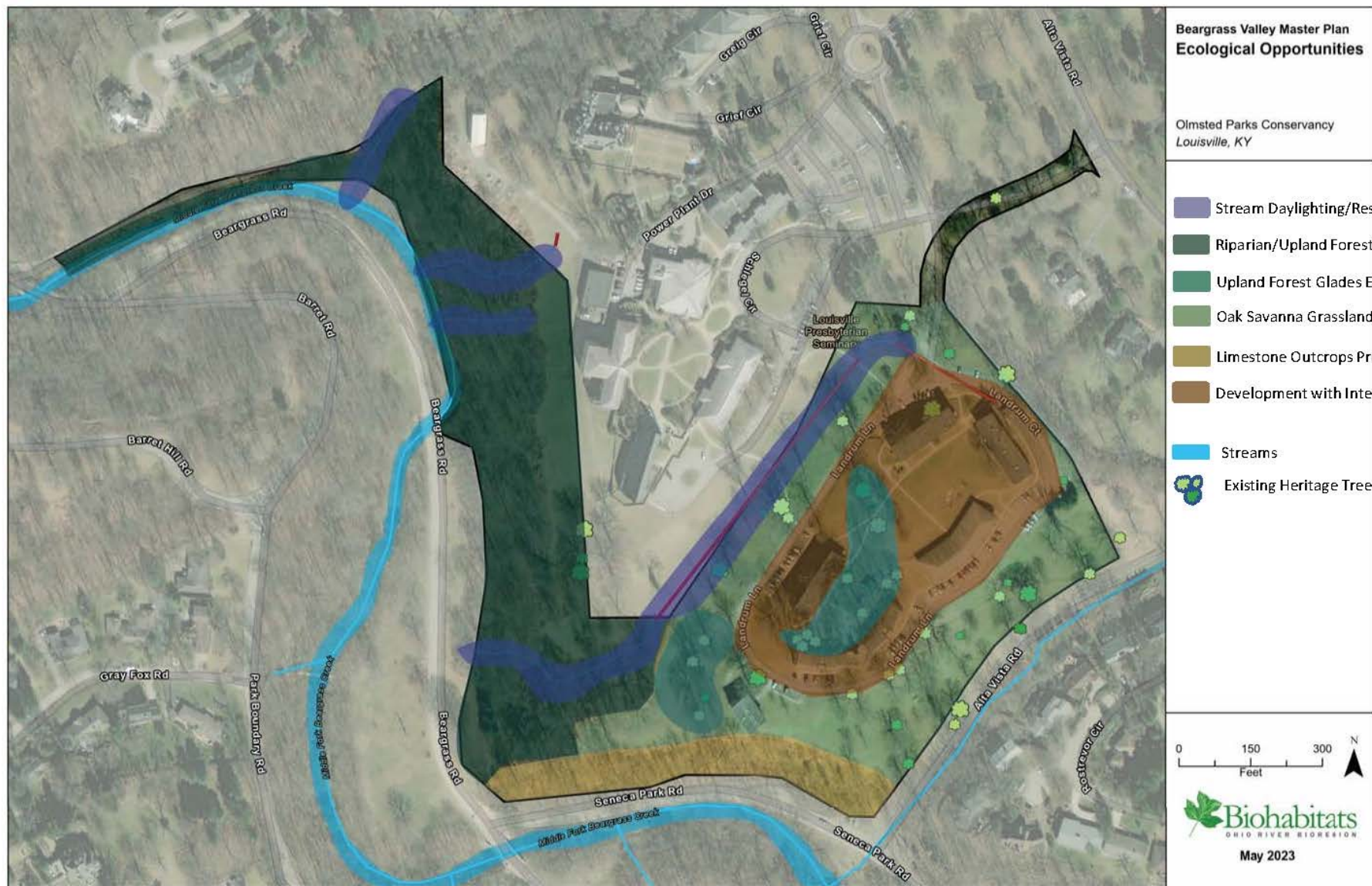


- 1** Intermittent stream. Entrenched and disconnected to floodplain
- 2** Ephemeral stream. Piped but broken, creating gullies.
- 3** Ephemeral stream. Piped but broken, creating gullies.

GENERAL ISSUES:

- 1. Lack of stream habitat diversity
- 2. Eroding banks and bed
- 3. Disconnected systems

ECOLOGICAL CONTEXT



OLMSTED CONTEXT



OLMSTED CONTEXT

5. Cherokee Park

Key Master Plan Recommendations for Cherokee Park

Willow Pond

Enrich landscape habitats around pond, including meadow perimeter on downslopes from golf course, draining to new wetland retention area before flowing into pond. Install aquatic and shoreline vegetation, with paths and fishing spots.

Barringer Hill Trail & Vista

Construct one-mile path loop around Barringer Hill, with bridges over Barringer Springs and connections to bridle trails and walking paths. Reestablish the park's native woodlands, plant Great Groves of Kentucky and open vista from Barringer Hill.

Barringer Hill Overlook

Construct open-air shelter around existing restrooms.

Barringer Springs to Beargrass Creek

Restore stonework at head of Barringer Springs and stabilize spring banks and drainage outfalls along stream to Beargrass Creek.

Central Woodlands Management & Trails

Conduct landscape management to reestablish native woodlands. Prioritize work areas and renovate bridle trails and walking paths. Close rogue trails and stabilize eroded areas.

Golf Course

Reorganize parking area and provide landscaped buffers along Barringer Hill, Willow Pond and Cherokee Parkway. Manage perimeter woodlands, with drainage swale improvements, and convert lawn to meadow where there is no conflict with playability.

Maintenance Facility

Renovate parking and yard areas, with landscape screening.

Scenic Loop

Stabilize road edge pavement and adjacent drainage swales, with inlet and culvert improvements and new parking layby areas. Renovate four bridges.

Two-Way Park Drives

Stabilize road edge pavement and adjacent drainage swales, with inlet and culvert improvements and new parking layby areas. Renovate five bridges.

Perimeter Woodlands Management & Trails

Conduct landscape management to reestablish native woodlands. Prioritize work areas and renovate bridle trails and walking paths. Close rogue trails and stabilize eroded areas.

Beargrass Creek Floodplain

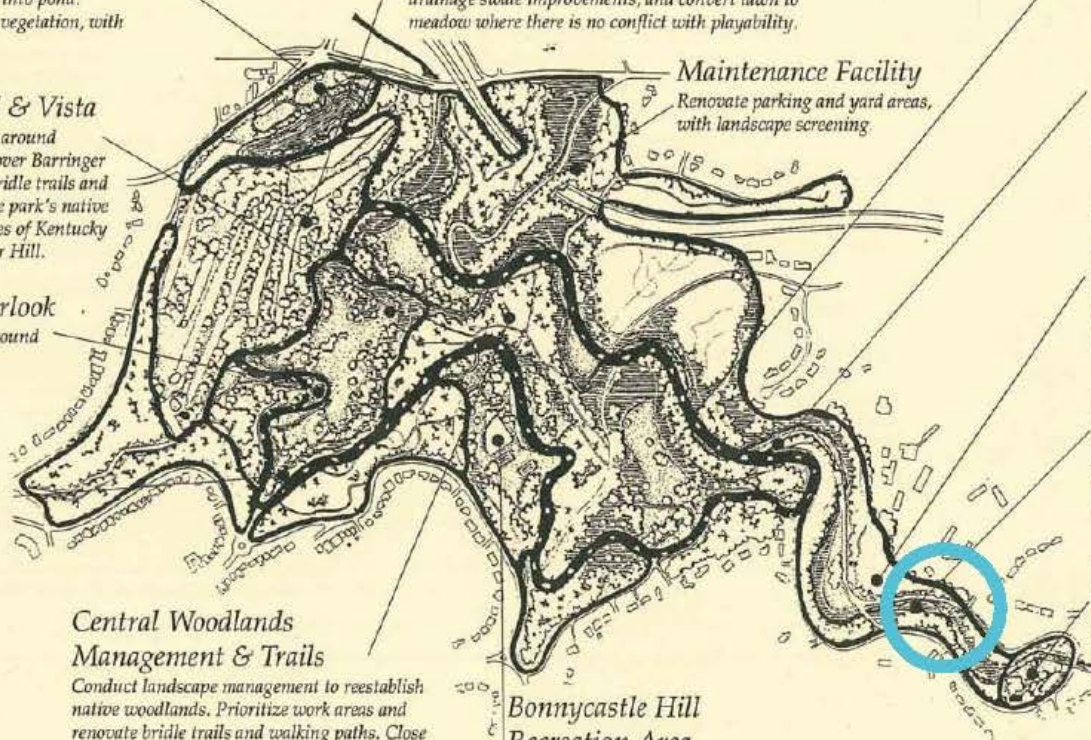
Stabilize channel and banks and enrich habitat, including pool riffles within channel, vegetated creek banks and cut-back banks to accommodate terraced, floodplain wet meadow areas.

Big Rock

Provide parking and path improvements. Stabilize and enrich floodplain habitats along Beargrass Creek to Big Rock.

Bonnycastle Hill Recreation Area

Renovate and enlarge parking area, with landscaped buffer along Park Boundary Road. On a phased basis, relocate tennis courts and basketball courts from elsewhere in park and improve baseball field. Improve passive areas.



100

5. Cherokee Park

BOARD OF PARK COMMISSIONERS OF THE CITY OF LOUISVILLE KY

GENERAL PLAN
FOR
CHEROKEE PARK

SCALE
0 100 200 300 400 500 600 700 800 900 1000

F.L. & S. L. LANDSCAPE ARCHITECTS
BROOKLYN, N.Y.

BOARD OF PARK COMMISSIONERS

JOHN S. L. LANDSCAPE ARCHITECT
1000 N. 10TH ST. SUITE 100
LOUISVILLE, KY 40203

SETTLED LAND
BORDERED BY PARKWAY
PARKWAY BOUNDARY
PARKWAY BOUNDARY
PARKWAY BOUNDARY

11. Beargrass Creek Floodplain

- Stabilize channel and banks and enrich habitat including pool riffles within channel, vegetated creek banks and cut-back banks to accommodate terraced, floodplain wet meadow areas.
- Conduct landscape management to re-establish native woodlands and meadows.
- Monitor water quality and work with MSD on floodway management and floodplain habitat enrichment.

CHEROKEE PARK HISTORIC ZONES PLAN

1 • Beargrass Creek Valley
2 • Rolling Slopes
3 • Hilltops & Ridges
4 • Golf Course
5 • Cherokee Parkway & West Park Frontage

5. Historic Zone Plan, prepared by Landscapes, 1993, overlaid on 1897 General Plan of Cherokee Park, Louisville, Kentucky. (FLONHS)

NORTH

CHEROKEE PARK HISTORIC ZONES PLAN

- 1 • Beargrass Creek Valley
- 2 • Rolling Slopes
- 3 • Hilltops & Ridges
- 4 • Golf Course
- 5 • Cherokee Parkway & West Park Frontage

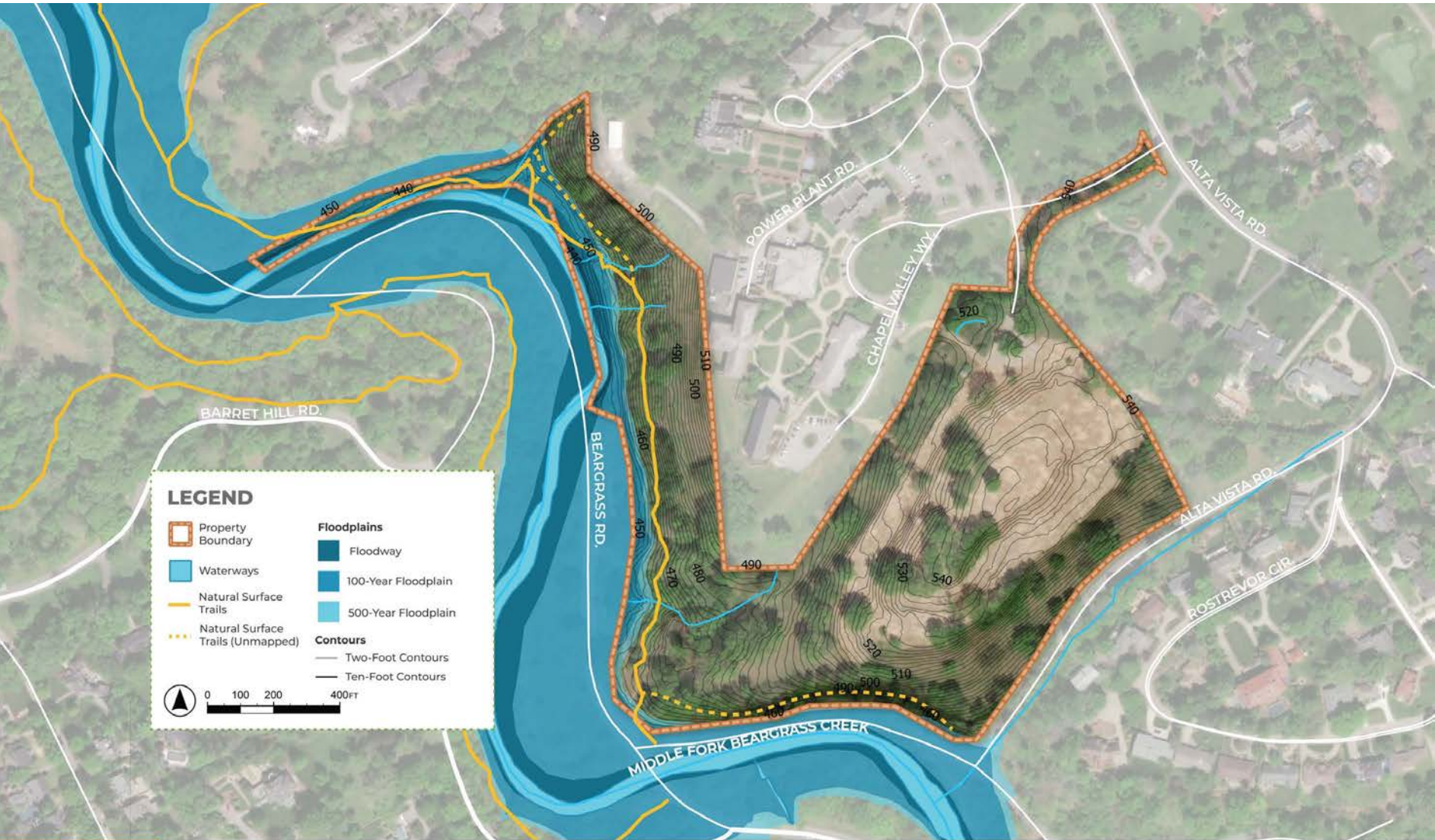
11. Beargrass Creek Floodplain

- Stabilize channel and banks and enrich habitat including pool riffles within channel, vegetated creek banks and cut-back banks to accommodate terraced, floodplain wet meadow areas.
- Conduct landscape management to re-establish native woodlands and meadows.
- Monitor water quality and work with MSD on floodway management and floodplain habitat enrichment.

5. Historic Zone Plan, prepared by Landscapes, 1993, overlaid on 1897 General Plan of Cherokee Park, Louisville, Kentucky. (FLONHS)

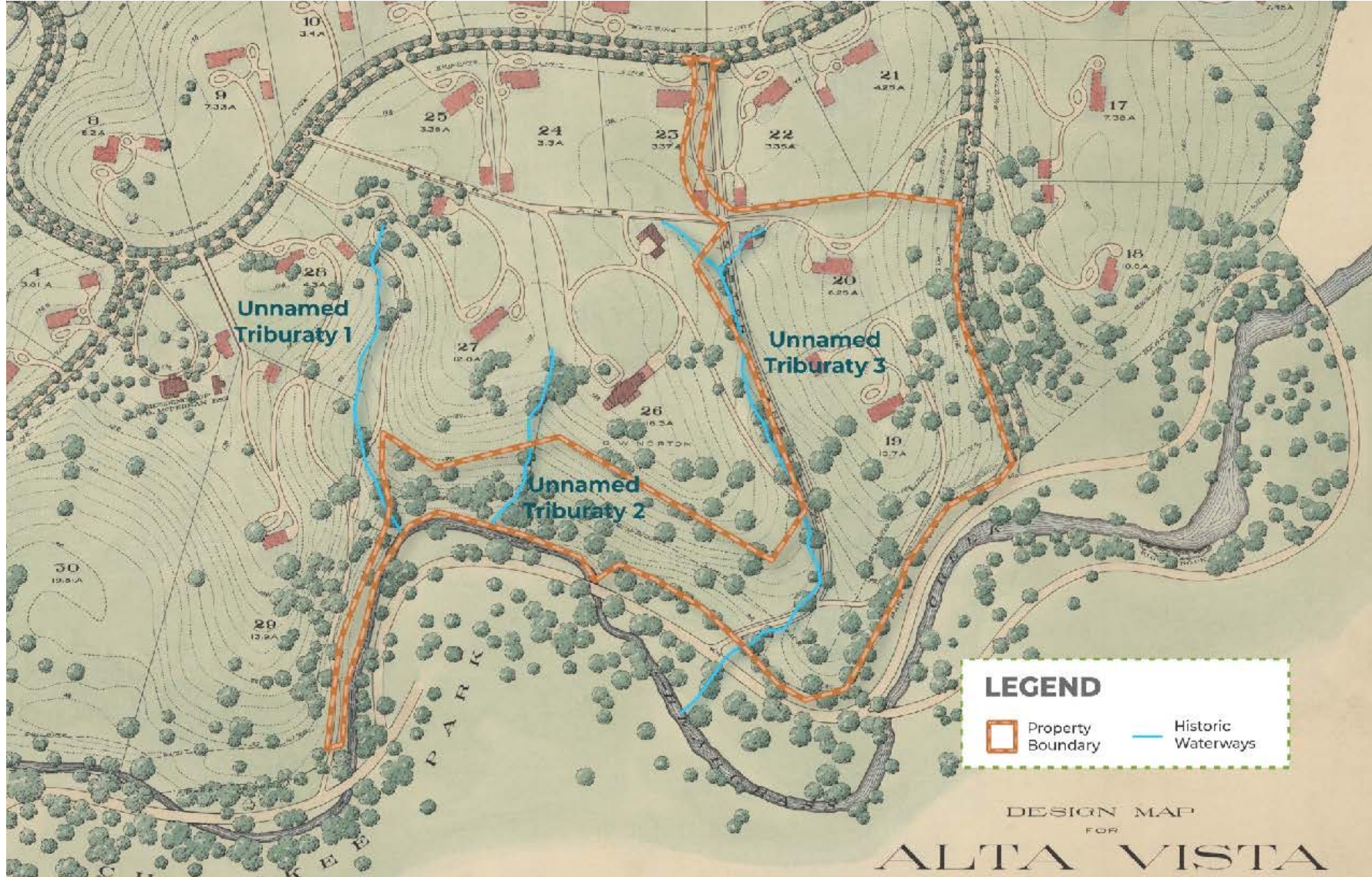
↑ NORTH

HYDROLOGY



Hydrology

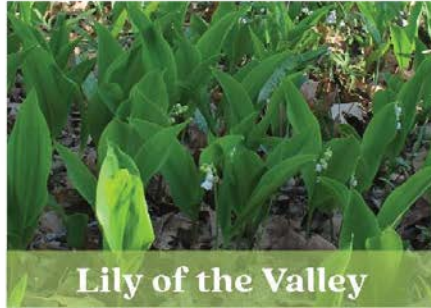
HISTORIC WATERWAYS



NOTABLE NATIVES

NOTABLE NATIVE SPECIES

- Beargrass or Eastern Wild Hyacinth (*Camassia schilloides*)
- Giant cane (*Arundinaria gigantea*)
- Yampa grass (*Perideridia* spp.)
- Redbud (*Cercis canadensis*)
- Ohio buckeye (*Aesculus glabra*)
- Smooth hydrangea (*Hydrangea arborescens*)
- Pawpaw (*Asimina triloba*)
- Chinkapin oak (*Quercus muehlenbergi*)
- Ironwood (*Carpinus caroliniana*)
- Bladdernut (*Staphylea trifolia*)
- Trillium (*Melanthiaceae* spp.)
- Bluebells (*Hyacinthoides* spp.)
- Mayapple (*Podophyllum peltatum*)
- Stonecrop (*Sedum ternatum*)
- Ferns (*Dryopteris* or *Adiantum* spp.)
- Crested Coral Root Orchid (*Hexalectris spicata*)



Lily of the Valley



Crested Coral Root

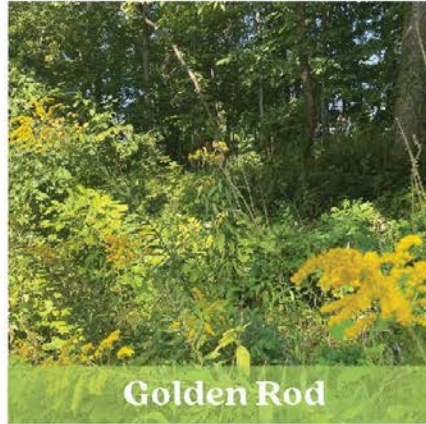
Source: US Forest Service



Trillium



White Trout Lily



Golden Rod

NONNATIVE INVASIVE

SPECIES that dominate the herbaceous and shrub layer

- English Ivy (*Hedera helix*)
- Garlic mustard (*Alliaria petiolata*)
- Bush honeysuckle (*Lonicera tartarica*, *Lonicera morrowii*)
- Periwinkle (*Vinca minor*)
- Japanese honeysuckle (*Lonicera japonica*)
- Wintercreeper (*Euonymus fortunei*)
- Japanese bittersweet (*Celastrus orbiculatus*)
- Lesser celandine/fig buttercups (*Ficaria verna*)



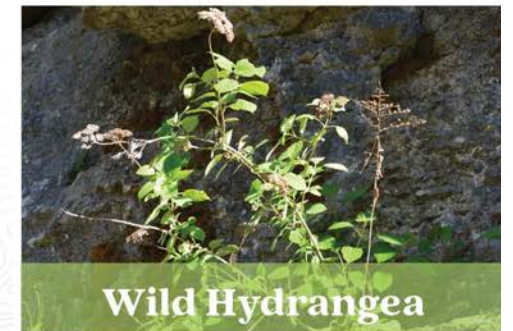
Beargrass



Bluebells



Dwarf Larkspur

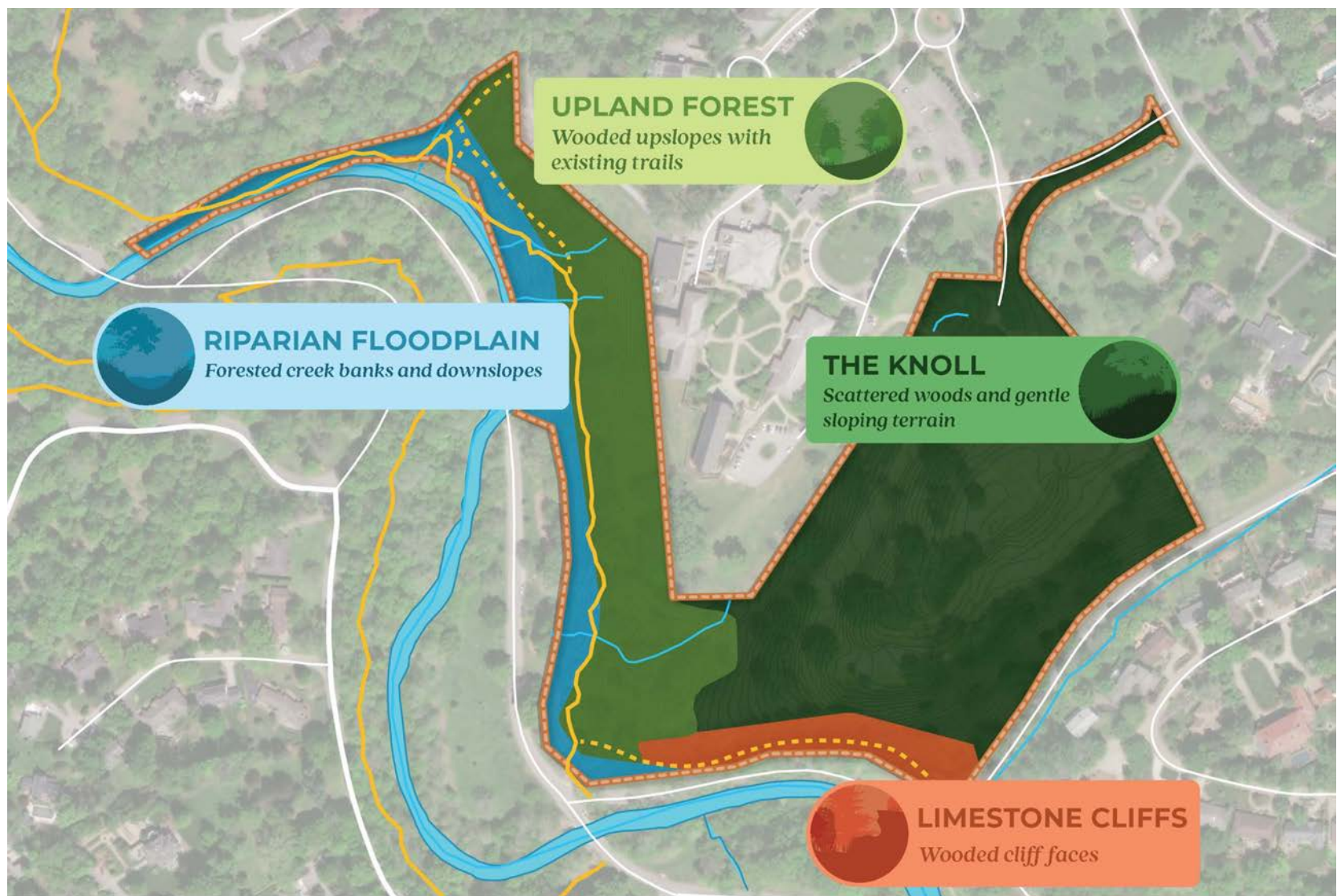


Wild Hydrangea



Virginia Creeper

LANDSCAPE ZONES



Landscape Zones

LANDSCAPE ZONES

RIPARIAN FLOODPLAIN

Forested creek banks and downslopes

SUITABLE USES:

Walking path (soft surface), establishment of native riparian planting, boardwalk, observation areas near Beargrass Creek, Entry Point at Beargrass Road and Park Boundary Road, interpretive node

UPLAND FOREST

Wooded upslopes with existing trails

SUITABLE USES:

Walking path (soft surface), Bike Trails, Entry Point (Alta Vista Road and Beargrass Road), preserve and enhance native plantings, interpretive node

LIMESTONE CLIFFS

Wooded cliff faces

SUITABLE USES:

Walking path (soft surface), Entry Point (Alta Vista Road and Beargrass Road), preserve and enhance native plantings, interpretive node

THE KNOLL

Scattered woods and gentle sloping terrain

SUITABLE USES:

Structure (office building, shelters, etc.), parking, hard surface trails, soft surface trails, bike trails, horticultural areas (ornamental plantings), short meadow, informal outdoor gathering space (organized open lawn)

RIPARIAN FLOODPLAIN



UPLAND FOREST



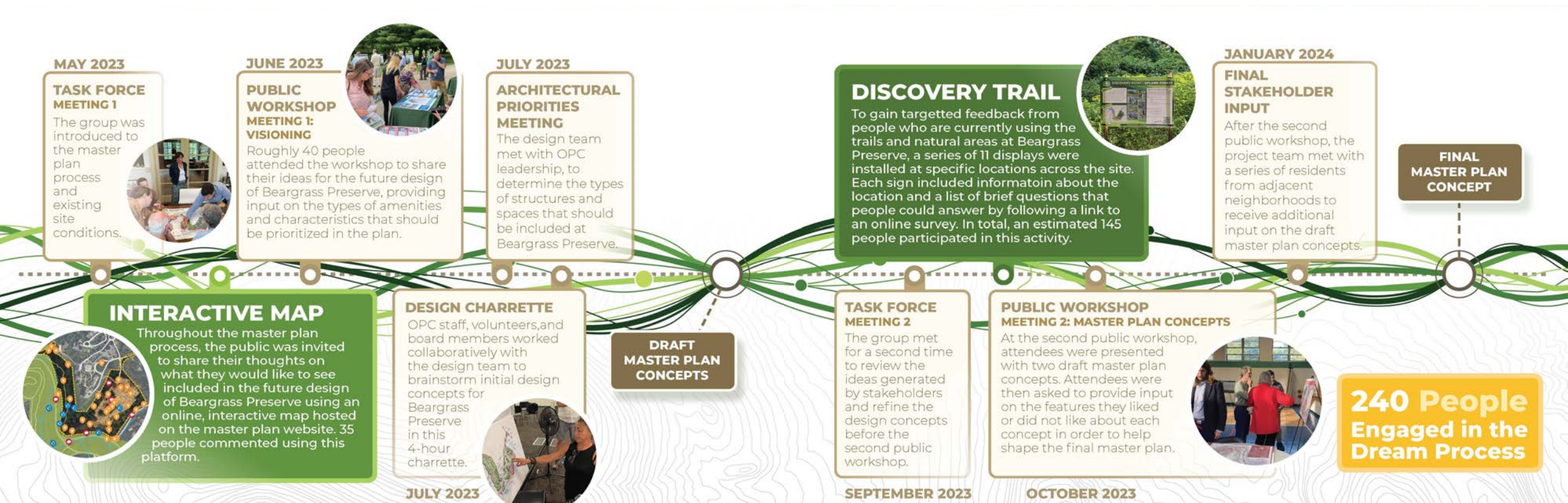
LIMESTONE CLIFFS



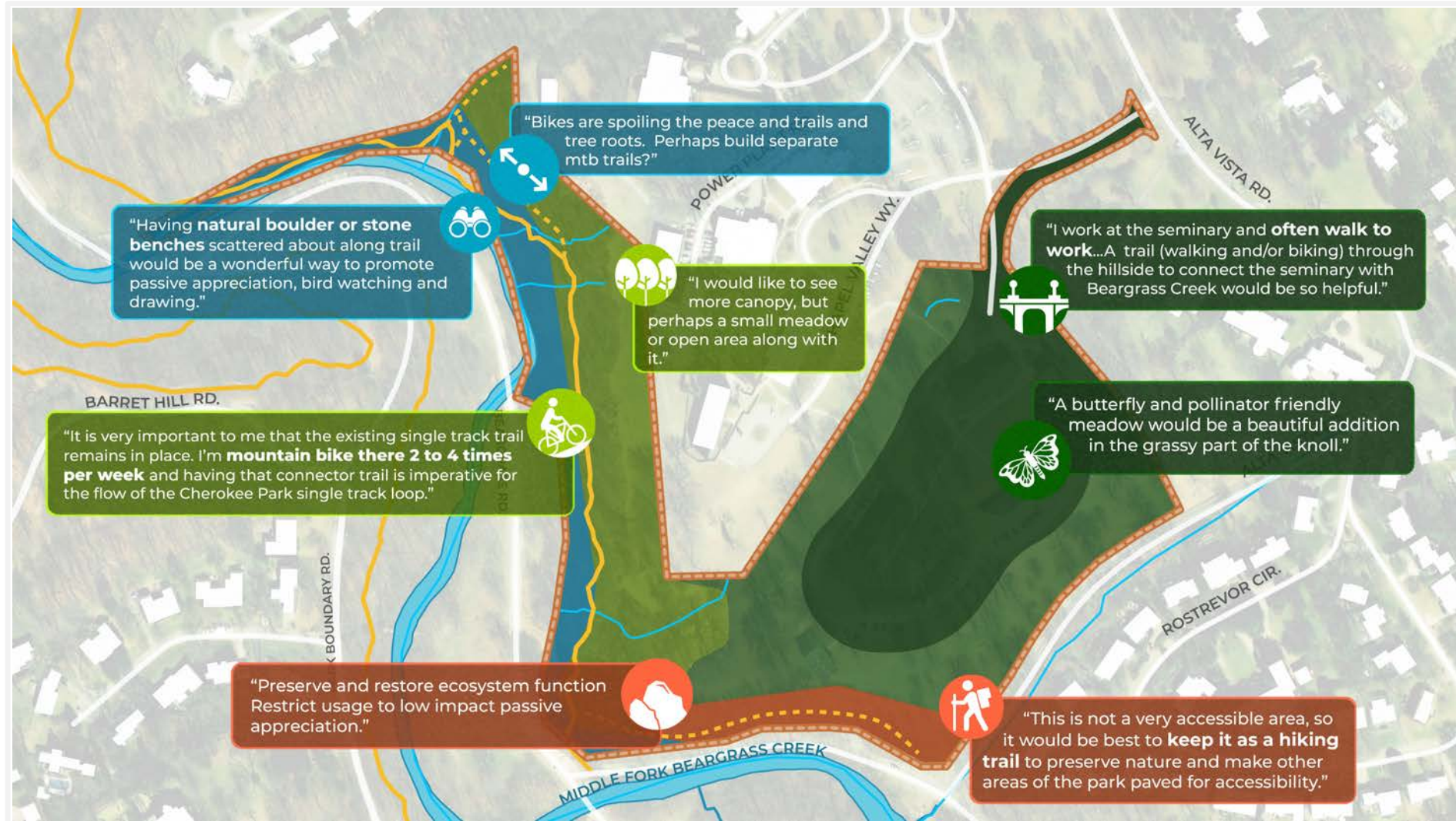
THE KNOLL



DREAM PROCESS



INTERACTIVE MAP



FEEDBACK



RIPARIAN FLOODPLAIN

Forested creek banks and downslopes

WHAT PEOPLE ARE SAYING:

“Rehabilitate and reconstruct the drystone walls and other stone features along the Seminary Road corridor.”

“This large Beech tree is particularly Beautiful.”

“Having natural boulder or stone benches scattered about along trails would be a wonderful way to promote passive appreciation, bird watching and drawing.”

“Foot paths. No Bikes by creek- move bikes to higher elevation. Boardwalk could be used in areas of frequent standing water or flooding.”



MAPPING STAKEHOLDER COMMENTS | RIPARIAN FLOODPLAIN

1 BIG IDEA #1

Relocate the trail entrance near Bernheim Bridge to create a more formal entry and reduce conflicts with traffic.

2 BIG IDEA #2

Encourage bicycle use in uphill areas to decrease erosion near Beargrass Creek.

3 BIG IDEA #3

Locate observation areas near the creek and consider constructing a boardwalk where paths flood easily.

FEEDBACK



UPLAND FOREST

Wooded upslopes with existing trails

WHAT PEOPLE ARE SAYING:

"These woodlands need to be protected and managed carefully to preserve the native plant diversity.."

"Please maintain a natural surface on the trail."

"Please preserve the multi-use trail to provide connectivity of the existing Cherokee trail loop.."

"Replace invasive plant and biology with soft mosses and lavenders."

"Keep the mountain bike trails in and add more. We love riding bikes at Cherokee park so close to the city."



MAPPING STAKEHOLDER COMMENTS | UPLAND FOREST

1

BIG IDEA #1

Maintain the existing forested areas and expand the tree canopy.

2

BIG IDEA #2

Explore options for separate bike and pedestrian trails to accommodate the needs of both modes.

FEEDBACK



LIMESTONE CLIFFS

Wooded cliff faces

WHAT PEOPLE ARE SAYING:

"This is not a very accessible area, so it would be best to keep it as a hiking trail to preserve nature and make other areas of the park paved for accessibility."

"This trail is important to the mountain bike community. Please do not change it!"

"Right now, that section is dangerous to traverse."

"This area needs to be preserved as an inspiring display of natural order... a display easily visible from the roadways."



MAPPING STAKEHOLDER COMMENTS | UPLAND FOREST

1

BIG IDEA #1

Limit development of paved trails in this area to control the impact that trail usage can have on sensitive species.

2

BIG IDEA #2

Consider options for limiting trail usage in this area to guard against overuse and improve safety.

FEEDBACK



THE KNOLL

Scattered woods and gentle sloping terrain

WHAT PEOPLE ARE SAYING:

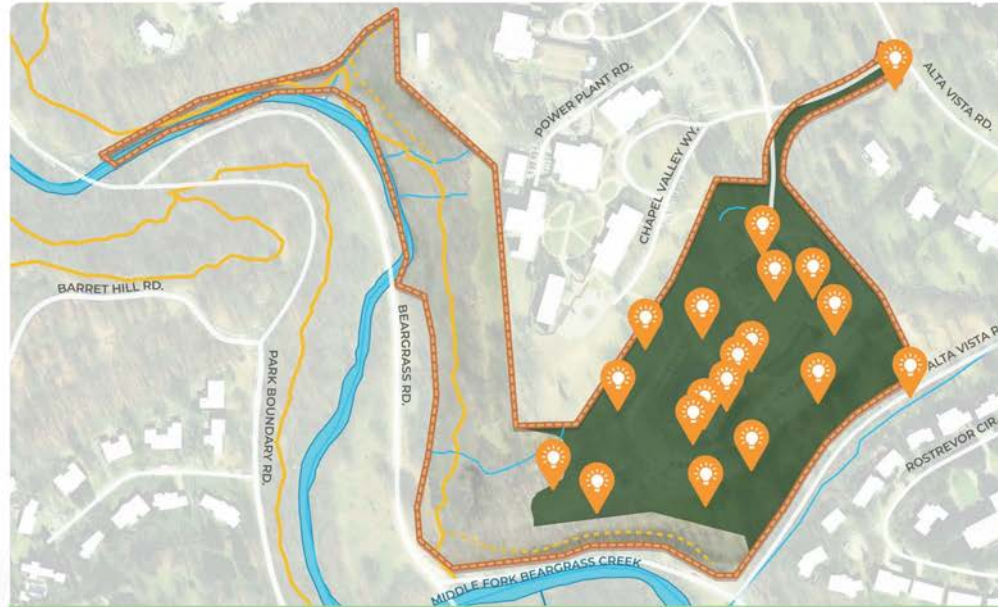
"Its beautiful rolling topography adds to the park. I like open spaces for people to gather and play."

"Install bike racks near the entrance from Alta Vista. It would be great to have a water fountain and a couple of picnic tables near the entrance as well."

"We need to use native plants in all layers of the forest and limit total mowed space that requires constant maintenance."

"Would love to see a natural meadow with pollinator plants and walkways."

"Keep Nature. The parks already have enough pavement."



MAPPING STAKEHOLDER COMMENTS | UPLAND FOREST

1

BIG IDEA #1

Embrace meadows and savannah-styled plantings to reduce the need for mowing and to support pollinators.

2

BIG IDEA #2

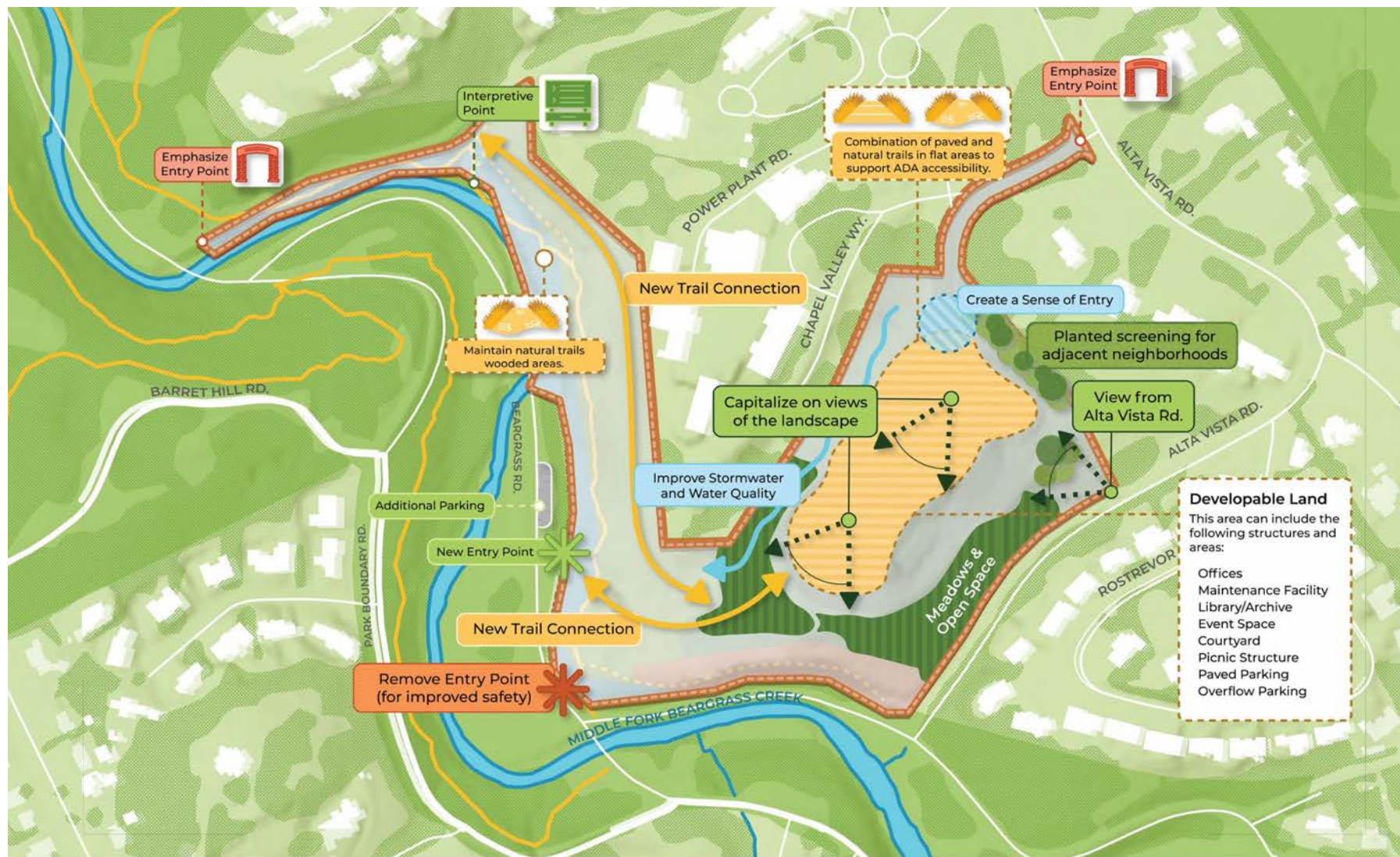
Limit the impact that paved surfaces will have on the landscape.

3

BIG IDEA #3

Dedicate some area in the Knoll for gatherings and open space.

DESIGN CHARTER



Charrette Input Summary

PROJECT GOALS



SITE SUITABILITY



OLMSTEDIAN DESIGN



PUBLIC ENGAGEMENT

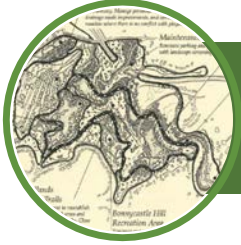


OPC FUTURE NEEDS

PROJECT GOALS



DESIGN FOR ECOLOGICAL UPLIFT – through reforestation, protect native species, and reinforcing natural waterways.



CREATE STRONG CONNECTIONS – between neighborhoods, parks, and trails.



CELEBRATE THE SITE AND COMMUNITY – by preserving greenspace for flexible public use.



DEVELOP A NEW HOME FOR OLMSTED PARKS CONSERVANCY – that provides room to grow as an organization.

SYNTHESIS CONCEPT



SYNTHESIS CONCEPT

WHAT THIS COULD LOOK LIKE:

PLANTINGS



Pollinator Meadow



Oak Savannah

PARKING



Daily Parking

TRAILS



Boardwalk



Paved Trails



Natural Surface Trails

ARCHITECTURAL ELEMENTS



Hillside Structures



Terraced Retaining Walls



Garden Courtyard



SITE PLAN





RAINGARDEN
ISLAND

GATHERING
LAWN

LIMESTONE
BOLLARD

BUILDING
STORMWATER

RAINGARDEN

STORMWATER
FEATURE







GROUND LEVEL OFFICES

This architectural rendering shows a modern building with a two-level design. The upper level is highlighted with a blue roof and large glass windows, while the lower level is constructed from red stone blocks. The building is set on a grassy hillside with a stone retaining wall and a path leading to it. The sky is blue with scattered clouds, and the surrounding landscape includes trees and a body of water in the background.

LIBRARY &
ARCHIVE

MEADOW LEVEL OFFICES









LOW MEADOW WITH
MIXED CANOPY

MEADOW LEVEL STAFF OFFICES
WITH ACCESS TO LANDSCAPE

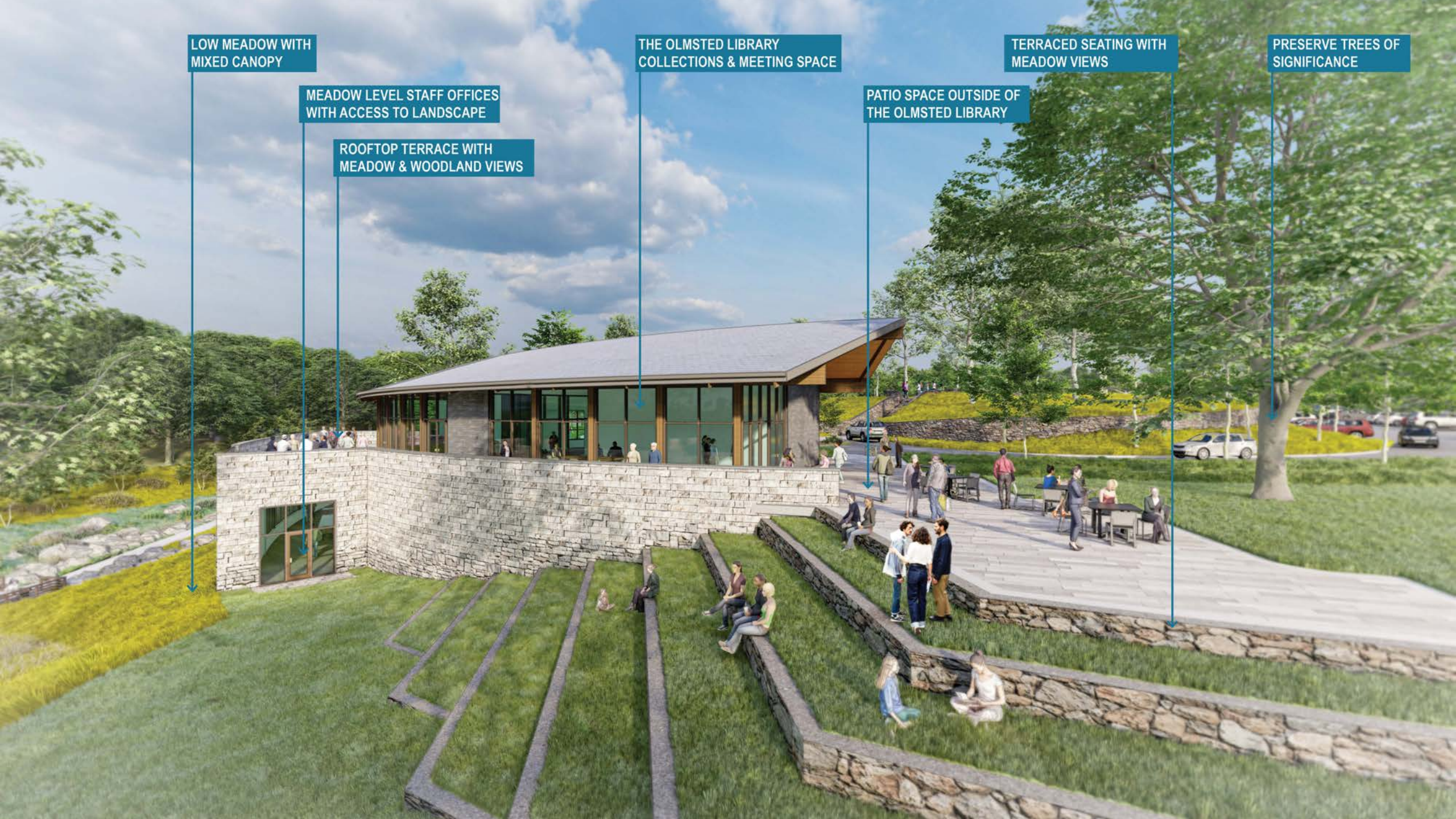
ROOFTOP TERRACE WITH
MEADOW & WOODLAND VIEWS

THE OLMSTED LIBRARY
COLLECTIONS & MEETING SPACE

PATIO SPACE OUTSIDE OF
THE OLMSTED LIBRARY

TERRACED SEATING WITH
MEADOW VIEWS

PRESERVE TREES OF
SIGNIFICANCE











DAYLIGHT PIPED
STORMWATER

MINIMIZE PAVEMENT &
IMPERVIOUS SURFACES

INTEGRATED BUILDING
STORMWATER MANAGEMENT

GEOTHERMAL FIELD
UNDER PARKING

INCREASE CANOPY
COVERAGE

MANAGE VIEWS FROM ALTA
VISTA WITH MIXED CANOPY
AND MEADOW PLANTINGS

WOODLAND MANAGEMENT
ON EXISTING WOODED
AREAS

NATIVE MEADOWS TO
IMPROVE ECOLOGICAL
FUNCTION

COLLABORATE WITH
LPTS ON BLENDING
LANDSCAPES

EDUCATIONAL
OPPORTUNITIES AT
LANDSCAPE INTERSECTIONS

MIXED PLANTINGS FOR
HABITAT DIVERSITY

REDUCE IMPACT IN
SENSITIVE AREAS

WETLAND FILTER CHAIN
TO CLEAN STORMWATER

STONE WEIR TO REDUCE
STORMWATER ENERGY









OLMSTED PARKS CONSERVANCY

BEARGRASS PRESERVE

